

For Research Use Only

LRRC20 Polyclonal antibody

Catalog Number: 25562-1-AP



Basic Information

Catalog Number:

25562-1-AP

Size:

150ul, Concentration: 650 ug/ml by Nanodrop and 353 ug/ml by Bradford method using BSA as the standard;

Source:

Rabbit

Isotype:

IgG

Immunogen Catalog Number:

AG22119

GenBank Accession Number:

BC024001

GeneID (NCBI):

55222

UNIPROT ID:

Q8TCA0

Full Name:

leucine rich repeat containing 20

Calculated MW:

184 aa, 21 kDa

Observed MW:

21-25 kDa

Purification Method:

Antigen affinity purification

Recommended Dilutions:

WB 1:500-1:1000

IHC 1:500-1:2000

IF/ICC 1:50-1:500

Applications

Tested Applications:

WB, IHC, IF/ICC, ELISA

Species Specificity:

human, mouse

Note-IHC: suggested antigen retrieval with TE buffer pH 9.0; (*) Alternatively, antigen retrieval may be performed with citrate buffer pH 6.0

Positive Controls:

WB : NIH/3T3 cells, Y79 cells

IHC : human stomach cancer tissue, human colon tissue, human testis tissue

IF/ICC : A431 cells,

Storage

Storage:

Store at -20°C. Stable for one year after shipment.

Storage Buffer:

PBS with 0.02% sodium azide and 50% glycerol pH 7.3.

Aliquoting is unnecessary for -20°C storage

*** 20ul sizes contain 0.1% BSA

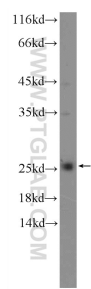
For technical support and original validation data for this product please contact:

T: 1 (888) 4PTGLAB (1-888-478-4522) (toll free in USA), or 1(312) 455-8498 (outside USA)

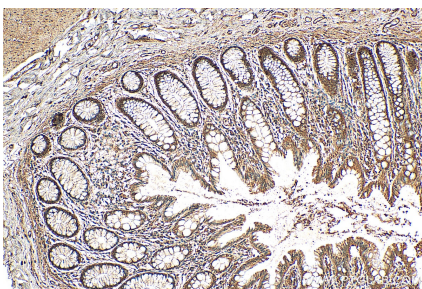
E: proteintech@ptglab.com
W: ptglab.com

This product is exclusively available under Proteintech Group brand and is not available to purchase from any other manufacturer.

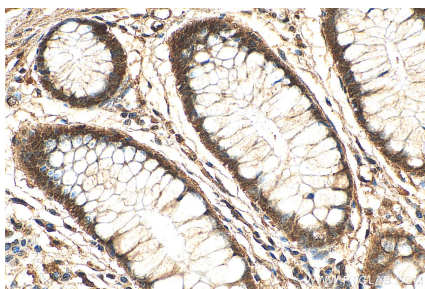
Selected Validation Data



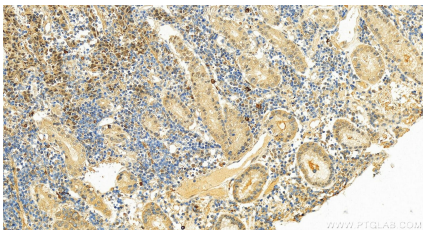
NIH/3T3 cells were subjected to SDS PAGE followed by western blot with 25562-1-AP (LRRC20 Antibody) at dilution of 1:600 incubated at 4 degree celsius over night.



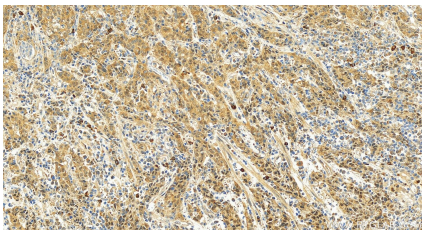
Immunohistochemical analysis of paraffin-embedded human colon tissue slide using 25562-1-AP (LRRC20 antibody) at dilution of 1:200 (under 10x lens). Heat mediated antigen retrieval with Tris-EDTA buffer (pH 9.0).



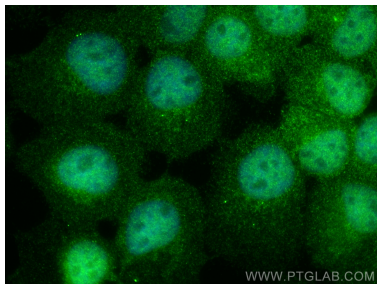
Immunohistochemical analysis of paraffin-embedded human colon tissue slide using 25562-1-AP (LRRC20 antibody) at dilution of 1:200 (under 40x lens). Heat mediated antigen retrieval with Tris-EDTA buffer (pH 9.0).



Immunohistochemical analysis of paraffin-embedded human stomach cancer tissue slide using 25562-1-AP (LRRC20 antibody) at dilution of 1:1000 (under 20x lens). Heat mediated antigen retrieval with Tris-EDTA buffer (pH 9.0).



Immunohistochemical analysis of paraffin-embedded human stomach cancer tissue slide using 25562-1-AP (LRRC20 antibody) at dilution of 1:1000 (under 20x lens). Heat mediated antigen retrieval with Tris-EDTA buffer (pH 9.0).



Immunofluorescent analysis of (4% PFA) fixed A431 cells using LRRC20 antibody (25562-1-AP) at dilution of 1:200 and CoraLite®488-Conjugated AffiniPure Goat Anti-Rabbit IgG(H+L).