

For Research Use Only

KBTBD10 Polyclonal antibody

Catalog Number: 25577-1-AP



Basic Information

Catalog Number: 25577-1-AP	GenBank Accession Number: BC006534	Purification Method: Antigen affinity purification
Size: 150ul , Concentration: 1000 µg/ml by Nanodrop and 353 µg/ml by Bradford method using BSA as the standard;	GeneID (NCBI): 10324	Recommended Dilutions: WB 1:1000-1:6000 IHC 1:20-1:200
Source: Rabbit	Full Name: kelch repeat and BTB (POZ) domain containing 10	
Isotype: IgG	Calculated MW: 606 aa, 68 kDa	
Immunogen Catalog Number: AG22311	Observed MW: 68 kDa	

Applications

Tested Applications:

IHC, WB, ELISA

Species Specificity:

human, mouse

Note-IHC: suggested antigen retrieval with TE buffer pH 9.0; (*) Alternatively, antigen retrieval may be performed with citrate buffer pH 6.0

Positive Controls:

WB : mouse heart tissue, mouse skeletal muscle tissue

IHC : human heart tissue, human skeletal muscle tissue

Background Information

KBTBD10, also named as KBTBD10 or KRP1, is a 606 amino acid protein, which contains one BACK (BTB/Kelch associated) domain, one BTB (POZ) domain and five Kelch repeats. KBTBD10 localizes in the cytoplasm and is expressed in Sarcomeric muscle. KBTBD10 is involved in skeletal muscle development and differentiation. KBTBD10 regulates proliferation and differentiation of myoblasts and plays a role in myofibril assembly by promoting lateral fusion of adjacent thin fibrils into mature, wide myofibrils.

Storage

Storage:

Store at -20°C. Stable for one year after shipment.

Storage Buffer:

PBS with 0.02% sodium azide and 50% glycerol pH 7.3.

Aliquoting is unnecessary for -20°C storage

*** 20ul sizes contain 0.1% BSA

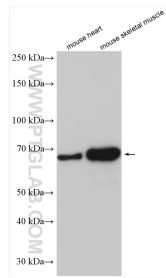
For technical support and original validation data for this product please contact:

T: 1 (888) 4PTGLAB (1-888-478-4522) (toll free in USA), or 1(312) 455-8498 (outside USA)

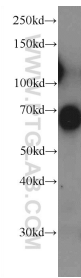
E: proteintech@ptglab.com
W: ptglab.com

This product is exclusively available under Proteintech Group brand and is not available to purchase from any other manufacturer.

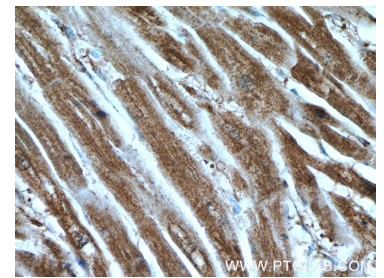
Selected Validation Data



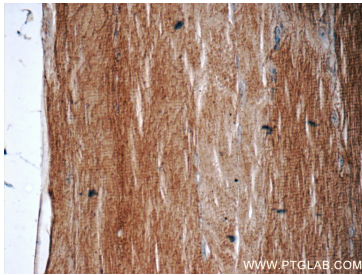
Various lysates were subjected to SDS PAGE followed by western blot with 25577-1-AP (KBTBD10 antibody) at dilution of 1:3000 incubated at room temperature for 1.5 hours.



mouse heart tissue were subjected to SDS PAGE followed by western blot with 25577-1-AP (KBTBD10 Antibody) at dilution of 1:1500 incubated at 4 degree celsius over night.



Immunohistochemical analysis of paraffin-embedded human heart tissue slide using 25577-1-AP (KBTBD10 Antibody) at dilution of 1:100 (under 40x lens).



Immunohistochemical analysis of paraffin-embedded human skeletal muscle tissue slide using 25577-1-AP (KBTBD10 Antibody) at dilution of 1:50 (under 40x lens).