

For Research Use Only

LRRC52 Polyclonal antibody

Catalog Number: 25584-1-AP



Basic Information

Catalog Number: 25584-1-AP	GenBank Accession Number: BC132981	Purification Method: Antigen affinity purification
Size: 150ul , Concentration: 730 µg/ml by Nanodrop;	GeneID (NCBI): 440699	Recommended Dilutions: WB 1:500-1:1000
Source: Rabbit	Full Name: leucine rich repeat containing 52	
Isotype: IgG	Calculated MW: 313 aa, 35 kDa	
Immunogen Catalog Number: AG22354	Observed MW: 45 kDa	

Applications

Tested Applications: WB, ELISA	Positive Controls: WB : mouse skeletal muscle tissue, rat skeletal muscle tissue
Species Specificity: human, mouse, rat	

Background Information

LRRC52 (leucine-rich repeat-containing protein 52) belongs to the gamma family of the BK channel accessory subunits, which potentially regulate the channel's gating properties (PMID: 22547800). It is dominantly expressed in testis and skeletal muscle, with much lower expression in several other tissues including placenta, kidney, lung, and some glands. LRRC52 has been reported as a Slo3 auxiliary subunit that helps define the specific alkalization dependence of K_{Sper} activation. LRRC52 has a calcular molecular weight of 35 kDa. This polyclonal antibody raised against 24-244aa of human LRRC52 reveals a band of 45 kDa, which is consistent with the molecular weight of glycosylated form of LRRC52 (PMID: 22084117).

Storage

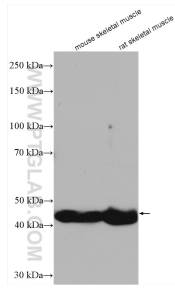
Storage:
Store at -20°C. Stable for one year after shipment.
Storage Buffer:
PBS with 0.02% sodium azide and 50% glycerol pH 7.3.
Aliquoting is unnecessary for -20°C storage

*** 20ul sizes contain 0.1% BSA

For technical support and original validation data for this product please contact:
T: 1 (888) 4PTGLAB (1-888-478-4522) (toll free in USA), or 1(312) 455-8498 (outside USA)
E: proteintech@ptglab.com
W: ptglab.com

This product is exclusively available under Proteintech Group brand and is not available to purchase from any other manufacturer.

Selected Validation Data



Various lysates were subjected to SDS PAGE followed by western blot with 25584-1-AP (LRRC52 antibody) at dilution of 1:800 incubated at room temperature for 1.5 hours.