

For Research Use Only

SMCHD1 Polyclonal antibody

Catalog Number: 25589-1-AP

1 Publications



Basic Information

Catalog Number:

25589-1-AP

Size:

150ul, Concentration: 350 ug/ml by Nanodrop and 233 ug/ml by Bradford method using BSA as the standard;

Source:

Rabbit

Isotype:

IgG

Immunogen Catalog Number:

AG22293

GenBank Accession Number:

BC035774

GeneID (NCBI):

23347

UNIPROT ID:

A6NHR9

Full Name:

structural maintenance of chromosomes flexible hinge domain containing 1

Calculated MW:

2005 aa, 226 kDa

Observed MW:

220 kDa

Purification Method:

Antigen affinity purification

Recommended Dilutions:

WB 1:500-1:1000

IP 0.5-4.0 ug for 1.0-3.0 mg of total protein lysate

IHC 1:50-1:500

IF/ICC 1:50-1:500

Applications

Tested Applications:

WB, IHC, IF/ICC, IP, ELISA

Cited Applications:

WB, IP

Species Specificity:

human, mouse

Cited Species:

human, mouse

Positive Controls:

WB: HeLa cells, HEK-293 cells

IP: HeLa cells,

IHC: mouse skeletal muscle tissue,

IF/ICC: HEK-293 cells,

Note-IHC: suggested antigen retrieval with TE buffer pH 9.0; (*) Alternatively, antigen retrieval may be performed with citrate buffer pH 6.0

Background Information

Structural maintenance of chromosomes flexible hinge domain containing 1 (SMCHD1) is considered a non-canonical member of the SMC family owing to differences in its type of ATPase domain and in its overall linear domain architecture (PMID: 32779700). SMCHD1 is best known for its role in promoting DNA methylation and gene silencing, with apparent roles in X chromosome inactivation, imprinted gene regulation, and autosomal gene cluster repression (PMID: 31668908). Variations in the SMCHD1 gene are associated with two debilitating human disorders, facioscapulohumeral muscular dystrophy (FSHD) and Bosma arhinia microphthalmia syndrome (BAMS)

Notable Publications

Author	Pubmed ID	Journal	Application
Shenli Yuan	36068616	Genome Biol	WB, IP

Storage

Storage:

Store at -20°C. Stable for one year after shipment.

Storage Buffer:

PBS with 0.02% sodium azide and 50% glycerol pH 7.3.

Aliquoting is unnecessary for -20°C storage

*** 20ul sizes contain 0.1% BSA

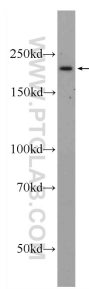
For technical support and original validation data for this product please contact:

T: 1 (888) 4PTGLAB (1-888-478-4522) (toll free in USA), or 1(312) 455-8498 (outside USA)

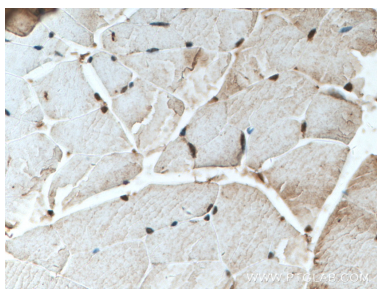
E: proteintech@ptglab.com
W: ptglab.com

This product is exclusively available under Proteintech Group brand and is not available to purchase from any other manufacturer.

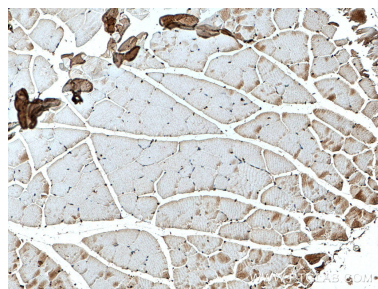
Selected Validation Data



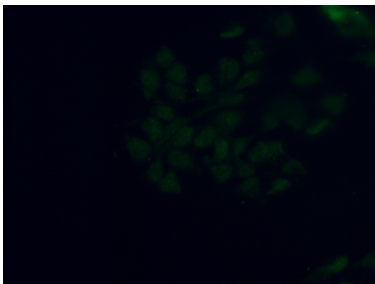
HeLa cells were subjected to SDS PAGE followed by western blot with 25589-1-AP (SMCHD1 Antibody) at dilution of 1:600 incubated at room temperature for 1.5 hours.



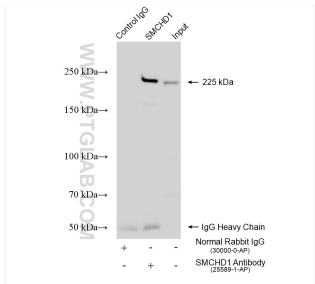
Immunohistochemical analysis of paraffin-embedded mouse skeletal muscle tissue slide using 25589-1-AP (SMCHD1 antibody) at dilution of 1:200 (under 40x lens. Heat mediated antigen retrieval with Tris-EDTA buffer (pH 9.0).



Immunohistochemical analysis of paraffin-embedded mouse skeletal muscle tissue slide using 25589-1-AP (SMCHD1 antibody) at dilution of 1:200 (under 10x lens. Heat mediated antigen retrieval with Tris-EDTA buffer (pH 9.0).



Immunofluorescent analysis of (4% PFA) fixed HEK-293 cells using 25589-1-AP (SMCHD1 antibody) at dilution of 1:200 and Alexa Fluor 488-Conjugated Goat Anti-Rabbit IgG(H+L).



IP result of anti-SMCHD1 (IP:25589-1-AP, 4ug; Detection:25589-1-AP 1:1000) with HeLa cells lysate 1085 ug.