

For Research Use Only

PRDM15 Polyclonal antibody

Catalog Number: 25590-1-AP

Featured Product

1 Publications



Basic Information

Catalog Number:

25590-1-AP

Size:

150ul, Concentration: 1000 ug/ml by Nanodrop and 413 ug/ml by Bradford method using BSA as the standard;

Source:

Rabbit

Isotype:

IgG

Immunogen Catalog Number:

AG22296

GenBank Accession Number:

BC067102

GeneID (NCBI):

63977

UNIPROT ID:

P57071

Full Name:

PR domain containing 15

Calculated MW:

1507 aa, 169 kDa

Observed MW:

169 kDa

Purification Method:

Antigen affinity purification

Recommended Dilutions:

WB 1:200-1:1000

IP 0.5-4.0 ug for 1.0-3.0 mg of total protein lysate

Applications

Tested Applications:

WB, IP, ELISA

Cited Applications:

WB

Species Specificity:

human

Cited Species:

human

Positive Controls:

WB : MCF-7 cells, Jurkat cells

IP : MCF-7 cells,

Background Information

The PR-domain containing proteins (PRDMs) have a common involvement in the modulation of gene activities. A PR-domain family member usually produces two products, called PR-plus and PR-minus, which differ by the presence or absence of the PR domain, respectively. The PR-plus product is underexpressed or disrupted in cancer cells, whereas the PR-minus product is present or overexpressed in cancer cells. This imbalance in the amount of the two products, which is a result of either genetic or epigenetic events, appears to be a determining factor of malignancy. PRDM15 (PR domain-containing protein 15), also known as PFM15 or ZNF298, is a 1507 amino acid protein belonging to the PRDM family. Localizing to the nucleus, PRDM15 contains sixteen C2H2-type zinc fingers and one SET domain. It is believed to participate in transcriptional regulation and may be involved in cell differentiation and tumorigenesis. PRDM15 exists several isoform and molecular weight of respective isoform is 169 kDa, 135kda, 62kDa.

Notable Publications

Author	Pubmed ID	Journal	Application
Nianli Liu	37817227	J Exp Clin Cancer Res	WB

Storage

Storage:

Store at -20°C. Stable for one year after shipment.

Storage Buffer:

PBS with 0.02% sodium azide and 50% glycerol pH 7.3.

Aliquoting is unnecessary for -20°C storage

*** 20ul sizes contain 0.1% BSA

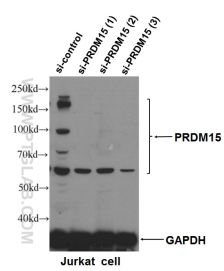
For technical support and original validation data for this product please contact:

T: 1 (888) 4PTGLAB (1-888-478-4522) (toll free in USA), or 1(312) 455-8498 (outside USA)

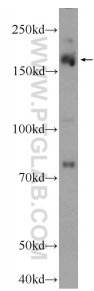
E: proteintech@ptglab.com
W: ptglab.com

This product is exclusively available under Proteintech Group brand and is not available to purchase from any other manufacturer.

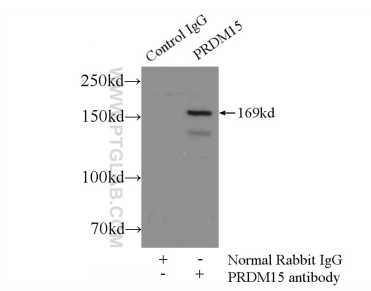
Selected Validation Data



WB result of PRDM15 (25590-1-AP, 1:500) with si-control and si-PRDM15 transfected Jurkat cells.



MCF-7 cells were subjected to SDS PAGE followed by western blot with 25590-1-AP (PRDM15 Antibody) at dilution of 1:300 incubated at room temperature for 1.5 hours.



IP result of anti-PRDM15 (IP:25590-1-AP, 5ug; Detection:25590-1-AP 1:500) with MCF-7 cells lysate 2500ug.