

For Research Use Only

KLHL10 Polyclonal antibody

Catalog Number: 25591-1-AP



Basic Information

Catalog Number:

25591-1-AP

Size:

150ul , Concentration: 350 ug/ml by Nanodrop and 233 ug/ml by Bradford method using BSA as the standard;

Source:

Rabbit

Isotype:

IgG

Immunogen Catalog Number:

AG22368

GenBank Accession Number:

BC067753

GeneID (NCBI):

317719

UNIPROT ID:

Q6JEL2

Full Name:

kelch-like 10 (Drosophila)

Calculated MW:

608 aa, 69 kDa

Observed MW:

65-70 kDa

Purification Method:

Antigen affinity purification

Recommended Dilutions:

WB 1:500-1:2000

Applications

Tested Applications:

WB, ELISA

Species Specificity:

human, mouse, rat

Positive Controls:

WB : mouse testis tissue, rat testis tissue

Storage

Storage:

Store at -20°C. Stable for one year after shipment.

Storage Buffer:

PBS with 0.02% sodium azide and 50% glycerol pH 7.3.

Aliquoting is unnecessary for -20°C storage

*** 20ul sizes contain 0.1% BSA

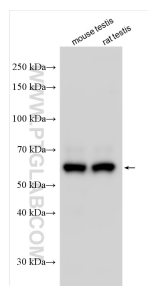
For technical support and original validation data for this product please contact:

T: 1 (888) 4PTGLAB (1-888-478-4522) (toll free in USA), or 1(312) 455-8498 (outside USA)

E: proteintech@ptglab.com
W: ptglab.com

This product is exclusively available under Proteintech Group brand and is not available to purchase from any other manufacturer.

Selected Validation Data



Various lysates were subjected to SDS PAGE followed by western blot with 25591-1-AP (KLHL10 antibody) at dilution of 1:1000 incubated at room temperature for 1.5 hours.