

For Research Use Only

C6orf108 Polyclonal antibody

Catalog Number: 25596-1-AP



Basic Information

Catalog Number:

25596-1-AP

Size:

150ul , Concentration: 900 ug/ml by Nanodrop and 340 ug/ml by Bradford method using BSA as the standard;

Source:

Rabbit

Isotype:

IgG

Immunogen Catalog Number:

AG22336

GenBank Accession Number:

BC011683

GeneID (NCBI):

10591

UNIPROT ID:

O43598

Full Name:

chromosome 6 open reading frame 108

Calculated MW:

174 aa, 19 kDa

Observed MW:

23 kDa

Purification Method:

Antigen affinity purification

Recommended Dilutions:

WB 1:5000-1:50000

Applications

Tested Applications:

WB, ELISA

Species Specificity:

human

Positive Controls:

WB : K-562 cells, Jurkat cells, HepG2 cells

Background Information

C6orf108 also named as DNPH1, catalyzes the cleavage of the N-glycosidic bond of deoxyribonucleoside 5'-monophosphates to yield deoxyribose 5-phosphate and a purine or pyrimidine base. Deoxyribonucleoside 5'-monophosphates containing purine bases are preferred to those containing pyrimidine bases (PMID: 24260472). Expressed at low levels in brain, colon, lung, peripheral blood leukocytes, placenta, small intestine, and thymus. Expressed at high levels in heart, kidney, liver, skeletal muscle and spleen. Overexpressed in a significant proportion of breast cancers (PMID: 18726892).

Storage

Storage:

Store at -20°C. Stable for one year after shipment.

Storage Buffer:

PBS with 0.02% sodium azide and 50% glycerol pH 7.3.

Aliquoting is unnecessary for -20°C storage

*** 20ul sizes contain 0.1% BSA

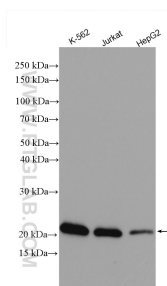
For technical support and original validation data for this product please contact:

T: 1 (888) 4PTGLAB (1-888-478-4522) (toll free in USA), or 1(312) 455-8498 (outside USA)

E: proteintech@ptglab.com
W: ptglab.com

This product is exclusively available under Proteintech Group brand and is not available to purchase from any other manufacturer.

Selected Validation Data



Various lysates were subjected to SDS PAGE followed by western blot with 25596-1-AP (C6orf108 antibody) at dilution of 1:10000 incubated at room temperature for 1.5 hours.