

For Research Use Only

TOMM5 Polyclonal antibody

Catalog Number: 25607-1-AP



Basic Information

Catalog Number: 25607-1-AP	GenBank Accession Number: BC034247	Purification Method: Antigen affinity purification
Size: 150ul , Concentration: 850 µg/ml by Nanodrop and 333 µg/ml by Bradford method using BSA as the standard;	GeneID (NCBI): 401505	Recommended Dilutions: WB 1:500-1:1000 IF 1:50-1:500
Source: Rabbit	Full Name: translocase of outer mitochondrial membrane 5 homolog (yeast)	
Isotype: IgG	Calculated MW: 51 aa, 6 kDa	
Immunogen Catalog Number: AG22275	Observed MW: 6-10 kDa	

Applications

Tested Applications: IF, WB, ELISA	Positive Controls:
Species Specificity: human, mouse	WB: mouse testis tissue, HepG2 cells IF: HepG2 cells,

Background Information

TOMM5, also named as C9orf105 and TOM5, has three isoforms with MW 6 kDa and 9-10 kDa.

Storage

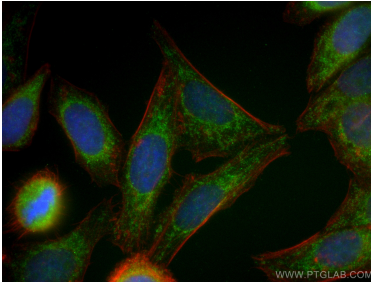
Storage:
Store at -20°C. Stable for one year after shipment.
Storage Buffer:
PBS with 0.02% sodium azide and 50% glycerol pH 7.3.
Aliquoting is unnecessary for -20°C storage

*** 20ul sizes contain 0.1% BSA

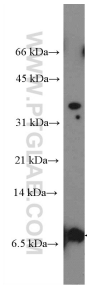
For technical support and original validation data for this product please contact:
T: 1 (888) 4PTGLAB (1-888-478-4522) (toll free in USA), or 1(312) 455-8498 (outside USA)
E: proteintech@ptglab.com
W: ptglab.com

This product is exclusively available under Proteintech Group brand and is not available to purchase from any other manufacturer.

Selected Validation Data



Immunofluorescent analysis of (4% PFA) fixed HepG2 cells using TOMM5 antibody (25607-1-AP) at dilution of 1:200 and CoraLite®488-Conjugated AffiniPure Goat Anti-Rabbit IgG(H+L), CL594-Phalloidine (red).



mouse testis tissue were subjected to SDS PAGE followed by western blot with 25607-1-AP (TOMM5 Antibody) at dilution of 1:600 incubated at room temperature for 1.5 hours.