

For Research Use Only

# TOMM5 Polyclonal antibody, PBS Only

Catalog Number:25607-1-PBS



## Basic Information

Catalog Number:

25607-1-PBS

Size:

100ug , Concentration: 1 mg/ml by Nanodrop;

Source:

Rabbit

Isotype:

IgG

Immunogen Catalog Number:

AG22275

GenBank Accession Number:

BC034247

GeneID (NCBI):

401505

UNIPROT ID:

Q8N4H5

Full Name:

translocase of outer mitochondrial membrane 5 homolog (yeast)

Calculated MW:

51 aa, 6 kDa

Observed MW:

6-10 kDa

Purification Method:

Antigen affinity purification

## Applications

Tested Applications:

WB, IHC, IF/ICC, Indirect ELISA

Species Specificity:

human, mouse

## Background Information

TOMM5, also named as C9orf105 and TOM5, has three isoforms with MW 6 kDa and 9-10 kDa.

## Storage

Storage:

Store at -80°C.

Storage Buffer:

PBS Only

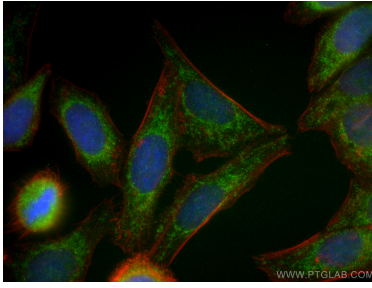
For technical support and original validation data for this product please contact:

T: 1 (888) 4PTGLAB (1-888-478-4522) (toll free in USA), or 1(312) 455-8498 (outside USA)

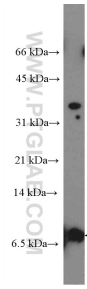
E: [proteintech@ptglab.com](mailto:proteintech@ptglab.com)  
W: [ptglab.com](http://ptglab.com)

This product is exclusively available under Proteintech Group brand and is not available to purchase from any other manufacturer.

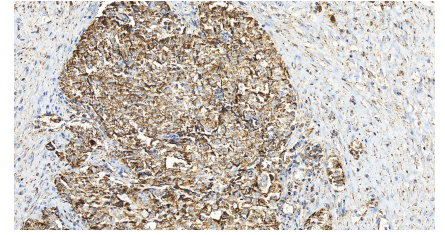
## Selected Validation Data



Immunofluorescent analysis of (4% PFA) fixed HepG2 cells using TOMM5 antibody (25607-1-AP) at dilution of 1:200 and CoraLite®488-Conjugated AffiniPure Goat Anti-Rabbit IgG(H+L), CL594-Phalloidine (red). This data was developed using the same antibody clone with 25607-1-PBS in a different storage buffer formulation.



mouse testis tissue were subjected to SDS PAGE followed by western blot with 25607-1-AP (TOMM5 Antibody) at dilution of 1:600 incubated at room temperature for 1.5 hours. This data was developed using the same antibody clone with 25607-1-PBS in a different storage buffer formulation.



Immunohistochemical analysis of paraffin-embedded human ovary cancer tissue slide using 25607-1-AP (TOMM5 antibody) at dilution of 1:200 (under 20x lens). Heat mediated antigen retrieval with Tris-EDTA buffer (pH 9.0). This data was developed using the same antibody clone with 25607-1-PBS in a different storage buffer formulation.