

For Research Use Only

FSD2 Polyclonal antibody

Catalog Number: 25609-1-AP



Basic Information

Catalog Number:

25609-1-AP

Size:

150ul , Concentration: 700 ug/ml by Nanodrop and 333 ug/ml by Bradford method using BSA as the standard;

Source:

Rabbit

Isotype:

IgG

Immunogen Catalog Number:

AG22229

GenBank Accession Number:

BC130569

GeneID (NCBI):

123722

UNIPROT ID:

A1L4K1

Full Name:

fibronectin type III and SPRY domain containing 2

Calculated MW:

749 aa, 85 kDa

Observed MW:

95-105 kDa

Purification Method:

Antigen affinity purification

Recommended Dilutions:

WB 1:1000-1:4000

IHC 1:50-1:500

Applications

Tested Applications:

WB, IHC, ELISA

Species Specificity:

human, mouse, rat

Note-IHC: suggested antigen retrieval with *TE buffer pH 9.0*; (*) Alternatively, antigen retrieval may be performed with *citrate buffer pH 6.0*

Positive Controls:

WB : mouse heart tissue, rat heart tissue

IHC : mouse heart tissue,

Storage

Storage:

Store at -20°C. Stable for one year after shipment.

Storage Buffer:

PBS with 0.02% sodium azide and 50% glycerol pH 7.3.

Aliquoting is unnecessary for -20°C storage

*** 20ul sizes contain 0.1% BSA

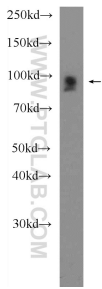
For technical support and original validation data for this product please contact:

T: 1 (888) 4PTGLAB (1-888-478-4522) (toll free in USA), or 1(312) 455-8498 (outside USA)

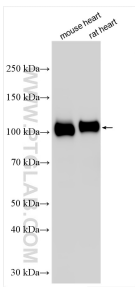
E: proteintech@ptglab.com
W: ptglab.com

This product is exclusively available under Proteintech Group brand and is not available to purchase from any other manufacturer.

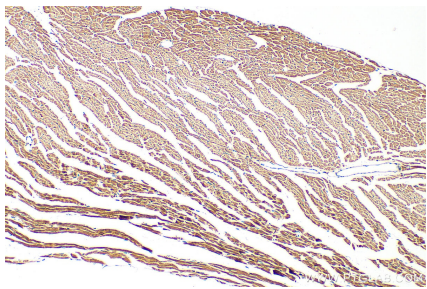
Selected Validation Data



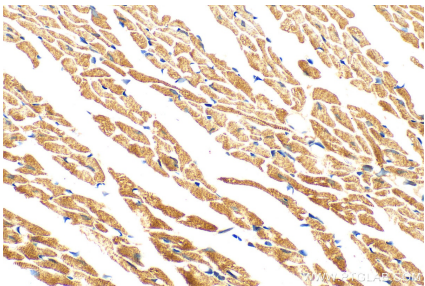
mouse heart tissue were subjected to SDS PAGE followed by western blot with 25609-1-AP (FSD2 Antibody) at dilution of 1:600 incubated at 4 degree celsius over night.



Various lysates were subjected to SDS PAGE followed by western blot with 25609-1-AP (FSD2 antibody) at dilution of 1:2000 incubated at room temperature for 1.5 hours.



Immunohistochemical analysis of paraffin-embedded mouse heart tissue slide using 25609-1-AP (FSD2 antibody) at dilution of 1:200 (under 10x lens). Heat mediated antigen retrieval with .



Immunohistochemical analysis of paraffin-embedded mouse heart tissue slide using 25609-1-AP (FSD2 antibody) at dilution of 1:200 (under 40x lens). Heat mediated antigen retrieval with .