

For Research Use Only

SMPD3 Polyclonal antibody

Catalog Number: 25613-1-AP

1 Publications



Basic Information

Catalog Number:

25613-1-AP

Size:

150ul , Concentration: 260 ug/ml by Nanodrop;

Source:

Rabbit

Isotype:

IgG

Immunogen Catalog Number:

AG22487

GenBank Accession Number:

BC112238

GeneID (NCBI):

55512

UNIPROT ID:

Q9NY59

Full Name:

sphingomyelin phosphodiesterase 3, neutral membrane (neutral sphingomyelinase II)

Calculated MW:

655 aa, 71 kDa

Observed MW:

70-71 kDa

Purification Method:

Antigen affinity purification

Recommended Dilutions:

WB: 1:500-1:2000

Applications

Tested Applications:

WB, ELISA

Cited Applications:

WB

Species Specificity:

human

Cited Species:

mouse

Positive Controls:

WB : A549 cells, K-562 cells

Background Information

SMPD3 (sphingomyelin phosphodiesterase 3), also called neutral sphingomyelinase-2 (nSMase2), is a Golgi-enriched, membrane-bound Zn²⁺-dependent hydrolase that converts sphingomyelin into ceramide and phosphocholine. Ceramide functions as a bioactive lipid second messenger that integrates cellular stress, apoptosis, autophagy and differentiation signals.

Notable Publications

Author	Pubmed ID	Journal	Application
Chunchun Wei	32208359	J Endocrinol	WB

Storage

Storage:

Store at -20°C. Stable for one year after shipment.

Storage Buffer:

PBS with 0.02% sodium azide and 50% glycerol, pH7.3

Aliquoting is unnecessary for -20°C storage

*** 20ul sizes contain 0.1% BSA

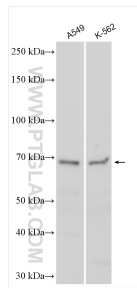
For technical support and original validation data for this product please contact:

T: 1 (888) 4PTGLAB (1-888-478-4522) (toll free in USA), or 1(312) 455-8498 (outside USA)

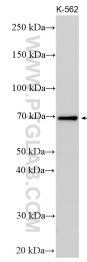
E: proteintech@ptglab.com
W: ptglab.com

This product is exclusively available under Proteintech Group brand and is not available to purchase from any other manufacturer.

Selected Validation Data



Various lysates were subjected to SDS PAGE followed by western blot with 25613-1-AP (SMPD3 antibody) at dilution of 1:1000 incubated at room temperature for 1.5 hours.



K-562 cells were subjected to SDS PAGE followed by western blot with 25613-1-AP (SMPD3 antibody) at dilution of 1:1000 incubated at room temperature for 1.5 hours.