

For Research Use Only

# SMPD3 Polyclonal antibody, PBS Only

Catalog Number: 25613-1-PBS



## Basic Information

**Catalog Number:**

25613-1-PBS

**Size:**

100ug, Concentration: 1 mg/ml by Nanodrop;

**Source:**

Rabbit

**Isotype:**

IgG

**Immunogen Catalog Number:**

AG22487

**GenBank Accession Number:**

BC112238

**GeneID (NCBI):**

55512

**UNIPROT ID:**

Q9NY59

**Full Name:**

sphingomyelin phosphodiesterase 3, neutral membrane (neutral sphingomyelinase II)

**Calculated MW:**

655 aa, 71 kDa

**Observed MW:**

70-71 kDa

**Purification Method:**

Antigen affinity purification

## Applications

**Tested Applications:**

WB, Indirect ELISA

**Species Specificity:**

human

## Background Information

SMPD3 (sphingomyelin phosphodiesterase 3), also called neutral sphingomyelinase-2 (nSMase2), is a Golgi-enriched, membrane-bound Zn<sup>2+</sup>-dependent hydrolase that converts sphingomyelin into ceramide and phosphocholine. Ceramide functions as a bioactive lipid second messenger that integrates cellular stress, apoptosis, autophagy and differentiation signals.

## Storage

**Storage:**

Store at -80°C.

**Storage Buffer:**

PBS only, pH7.3

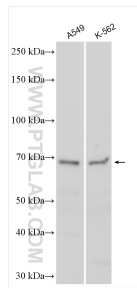
For technical support and original validation data for this product please contact:

T: 1 (888) 4PTGLAB (1-888-478-4522) (toll free in USA), or 1(312) 455-8498 (outside USA)

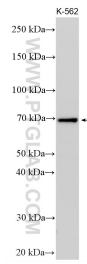
E: [proteintech@ptglab.com](mailto:proteintech@ptglab.com)  
W: [ptglab.com](http://ptglab.com)

**This product is exclusively available under Proteintech Group brand and is not available to purchase from any other manufacturer.**

## Selected Validation Data



Various lysates were subjected to SDS PAGE followed by western blot with 25613-1-AP (SMPD3 antibody) at dilution of 1:1000 incubated at room temperature for 1.5 hours. This data was developed using the same antibody clone with 25613-1-PBS in a different storage buffer formulation.



K-562 cells were subjected to SDS PAGE followed by western blot with 25613-1-AP (SMPD3 antibody) at dilution of 1:1000 incubated at room temperature for 1.5 hours. This data was developed using the same antibody clone with 25613-1-PBS in a different storage buffer formulation.