

For Research Use Only

BHLHE22 Polyclonal antibody

Catalog Number: 25622-1-AP **2 Publications**



Basic Information

Catalog Number: 25622-1-AP	GenBank Accession Number: BC156671	Purification Method: Antigen affinity purification
Size: 150ul, Concentration: 600 µg/ml by Nanodrop and 293 µg/ml by Bradford method using BSA as the standard;	GeneID (NCBI): 27319	Recommended Dilutions: WB 1:200-1:1000 IHC 1:50-1:500 IF 1:10-1:100
Source: Rabbit	Full Name: basic helix-loop-helix family, member e22	
Isotype: IgG	Calculated MW: 381 aa, 37 kDa	
Immunogen Catalog Number: AG20966	Observed MW: 37 kDa	

Applications

Tested Applications: IF, IHC, WB, ELISA	Positive Controls: WB : SH-SY5Y cells, IHC : human brain tissue, IF : SH-SY5Y cells,
Cited Applications: WB	
Species Specificity: human, mouse	
Cited Species: goat, mouse	
Note-IHC: suggested antigen retrieval with TE buffer pH 9.0; (*) Alternatively, antigen retrieval may be performed with citrate buffer pH 6.0	

Background Information

Basic helix-loop-helix family member e22 (BHLHE22), a basic helix loop helix transcription factor family member, acts as a transcriptional repressor and has a role in cell differentiation in neuron development (PMID: 36941015). BHLHE22 expression serves as a potential biomarker for ICI treatment prediction and favorable prognosis, and that is associated with microenvironment immune status (PMID: 35806162).

Notable Publications

Author	Pubmed ID	Journal	Application
Na Zhou	35675826	Cell Metab	WB
Xiaopeng An	28704526	PLoS One	WB

Storage

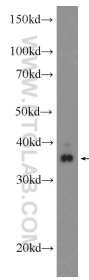
Storage:
Store at -20°C. Stable for one year after shipment.
Storage Buffer:
PBS with 0.02% sodium azide and 50% glycerol pH 7.3.
Aliquoting is unnecessary for -20°C storage

*** 20ul sizes contain 0.1% BSA

For technical support and original validation data for this product please contact:
T: 1 (888) 4PTGLAB (1-888-478-4522) (toll free in USA), or 1(312) 455-8498 (outside USA)
E: proteintech@ptglab.com
W: ptglab.com

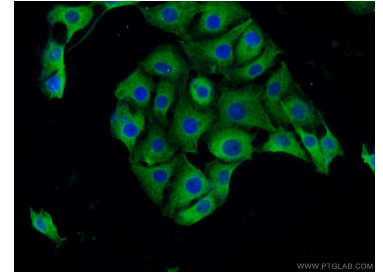
This product is exclusively available under Proteintech Group brand and is not available to purchase from any other manufacturer.

Selected Validation Data



SH-SY5Y cells were subjected to SDS PAGE followed by western blot with 25622-1-AP (BHLHE22 Antibody) at dilution of 1:300 incubated at room temperature for 1.5 hours.

Immunohistochemical analysis of paraffin-embedded human brain tissue slide using 25622-1-AP (BHLHE22 Antibody) at dilution of 1:200 (under 40x lens).



Immunofluorescent analysis of SH-SY5Y cells using 25622-1-AP (BHLHE22 antibody) at dilution of 1:25 and Alexa Fluor 488-conjugated AffiniPure Goat Anti-Rabbit IgG(H+L).