

For Research Use Only

CHCHD3 Polyclonal antibody

Catalog Number: 25625-1-AP **20 Publications**



Basic Information

Catalog Number: 25625-1-AP	GenBank Accession Number: BC014839	Purification Method: Antigen affinity purification
Size: 150ul , Concentration: 600 µg/ml by Nanodrop and 340 µg/ml by Bradford method using BSA as the standard;	GeneID (NCBI): 54927	Recommended Dilutions: WB 1:4000-1:12000 IP 0.5-4.0 ug for IP and 1:500-1:2000 for WB
Source: Rabbit	Full Name: coiled-coil-helix-coiled-coil-helix domain containing 3	IHC 1:50-1:500 IF 1:50-1:500
Isotype: IgG	Calculated MW: 227 aa, 26 kDa	
Immunogen Catalog Number: AG22579	Observed MW: 26 kDa	

Applications

Tested Applications: IF, IHC, IP, WB, ELISA	Positive Controls:
Cited Applications: IF, WB	WB : HEK-293 cells, human placenta tissue, A431 cells, mouse liver tissue, NIH/3T3 cells, Jurkat cells, HeLa cells
Species Specificity: human, mouse	IP : HeLa cells,
Cited Species: human, mouse	IHC : human liver tissue, human heart tissue
Note-IHC: <i>suggested antigen retrieval with TE buffer pH 9.0; (*) Alternatively, antigen retrieval may be performed with citrate buffer pH 6.0</i>	IF : HepG2 cells,

Background Information

Notable Publications

Author	Pubmed ID	Journal	Application
Yutong Shang	36104602	Acta Neuropathol	WB
Takahiro Yoshinaka	31522117	iScience	WB
Foteini Violitzi	31550165	J Proteome Res	WB

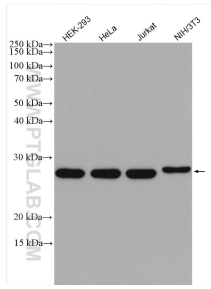
Storage

Storage:
Store at -20°C. Stable for one year after shipment.
Storage Buffer:
PBS with 0.02% sodium azide and 50% glycerol pH 7.3.
Aliquoting is unnecessary for -20°C storage

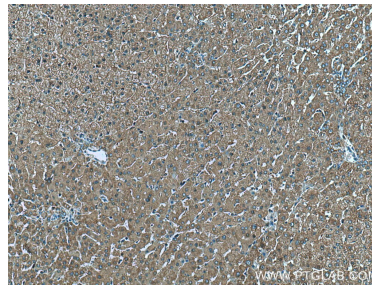
For technical support and original validation data for this product please contact:
T: 1 (888) 4PTGLAB (1-888-478-4522) (toll free in USA), or 1(312) 455-8498 (outside USA)
E: proteintech@ptglab.com
W: ptglab.com

This product is exclusively available under Proteintech Group brand and is not available to purchase from any other manufacturer.

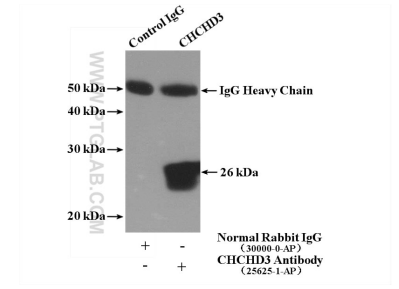
Selected Validation Data



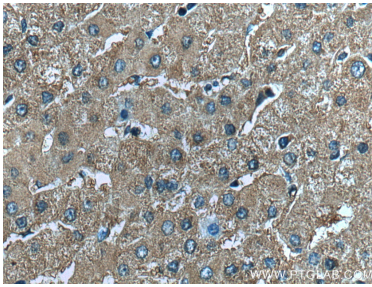
Various lysates were subjected to SDS PAGE followed by western blot with 25625-1-AP (CHCHD3 antibody) at dilution of 1:8000 incubated at room temperature for 1.5 hours.



Immunohistochemical analysis of paraffin-embedded human liver tissue slide using 25625-1-AP (CHCHD3 antibody) at dilution of 1:200 (under 10x lens). Heat mediated antigen retrieval with Tris-EDTA buffer (pH 9.0).



IP Result of anti-CHCHD3 (IP:25625-1-AP, 4ug; Detection:25625-1-AP 1:1000) with HeLa cells lysate 2600ug.



Immunohistochemical analysis of paraffin-embedded human liver tissue slide using 25625-1-AP (CHCHD3 antibody) at dilution of 1:200 (under 40x lens). Heat mediated antigen retrieval with Tris-EDTA buffer (pH 9.0).



Immunofluorescent analysis of (4% PFA) fixed HepG2 cells using CHCHD3 antibody (25625-1-AP) at dilution of 1:200 and CoraLite® 488-Conjugated AffiniPure Goat Anti-Rabbit IgG(H+L), CL594-Phalloidin (red).