

For Research Use Only

ZCRB1 Polyclonal antibody

Catalog Number: 25629-1-AP

2 Publications



Basic Information

Catalog Number:

25629-1-AP

Size:

150ul, Concentration: 600 ug/ml by Nanodrop and 367 ug/ml by Bradford method using BSA as the standard;

Source:

Rabbit

Isotype:

IgG

Immunogen Catalog Number:

AG22095

GenBank Accession Number:

BC022543

GeneID (NCBI):

85437

UNIPROT ID:

Q8TBF4

Full Name:

zinc finger CCHC-type and RNA binding motif 1

Calculated MW:

217 aa, 25 kDa

Observed MW:

25-30 kDa

Purification Method:

Antigen affinity purification

Recommended Dilutions:

WB 1:500-1:2000

IHC 1:50-1:500

Applications

Tested Applications:

WB, IHC, ELISA

Cited Applications:

WB

Species Specificity:

human, mouse, rat

Cited Species:

human

Note-IHC: suggested antigen retrieval with TE buffer pH 9.0; (*) Alternatively, antigen retrieval may be performed with citrate buffer pH 6.0

Positive Controls:

WB : ARPE-19 cells, Neuro-2a cells, Raji cells, SMMC-7721 cells, mouse testis tissue, rat testis tissue

IHC : human ovary cancer tissue,

Notable Publications

Author	Pubmed ID	Journal	Application
Jian Song	35538499	J Exp Clin Cancer Res	WB
Geralde Powell-Rodgers	39149385	bioRxiv	WB

Storage

Storage:

Store at -20°C. Stable for one year after shipment.

Storage Buffer:

PBS with 0.02% sodium azide and 50% glycerol pH 7.3.

Aliquoting is unnecessary for -20°C storage

*** 20ul sizes contain 0.1% BSA

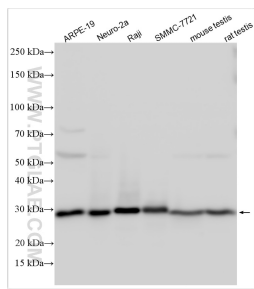
For technical support and original validation data for this product please contact:

T: 1 (888) 4PTGLAB (1-888-478-4522) (toll free in USA), or 1(312) 455-8498 (outside USA)

E: proteintech@ptglab.com
W: ptglab.com

This product is exclusively available under Proteintech Group brand and is not available to purchase from any other manufacturer.

Selected Validation Data



Various lysates were subjected to SDS PAGE followed by western blot with 25629-1-AP (ZCRB1 antibody) at dilution of 1:1000 incubated at room temperature for 1.5 hours.

Immunohistochemical analysis of paraffin-embedded human ovary cancer tissue slide using 25629-1-AP (ZCRB1 antibody) at dilution of 1:200 (under 20x lens). Heat mediated antigen retrieval with Tris-EDTA buffer (pH 9.0).