

For Research Use Only

PAN3 Polyclonal antibody

Catalog Number: 25655-1-AP



Basic Information

Catalog Number: 25655-1-AP	GenBank Accession Number: BC128180	Purification Method: Antigen affinity purification
Size: 150ul , Concentration: 450 ug/ml by Nanodrop;	GeneID (NCBI): 255967	Recommended Dilutions: WB 1:1000-1:4000 IHC 1:250-1:1000
Source: Rabbit	UNIPROT ID: Q58A45	
Isotype: IgG	Full Name: PAN3 poly(A) specific ribonuclease subunit homolog (S. cerevisiae)	
Immunogen Catalog Number: AG22559	Calculated MW: 887 aa, 96 kDa	
	Observed MW: 65-68 kDa	

Applications

Tested Applications: WB, IHC, ELISA	Positive Controls:
Species Specificity: human, mouse	WB : HeLa cells, Jurkat cells, NIH/3T3 cells
Note-IHC: suggested antigen retrieval with TE buffer pH 9.0; (*) Alternatively, antigen retrieval may be performed with citrate buffer pH 6.0	IHC : human ovary cancer tissue,

Background Information

Shortening of the poly(A) tail in mRNA, called deadenylation, is the first rate-limiting step in mRNA turnover. PAN3 is the regulatory subunit of a cytoplasmic poly(A) nuclease complex that links the catalytic PAN2 subunit to the poly(A)-binding protein PABP, which stimulates PAN2-dependent deadenylation activity (PMID: 14583602). PAN3 has four isoforms, isoform1: 95 kDa; isoform2: 64 kDa, isoform3: 89 kDa and isoform4: 72 kDa. This antibody recognizes isoform2.

Storage

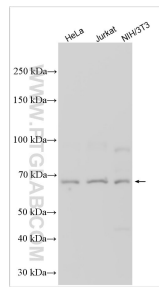
Storage:
Store at -20°C. Stable for one year after shipment.
Storage Buffer:
PBS with 0.02% sodium azide and 50% glycerol pH 7.3.
Aliquoting is unnecessary for -20°C storage

*** 20ul sizes contain 0.1% BSA

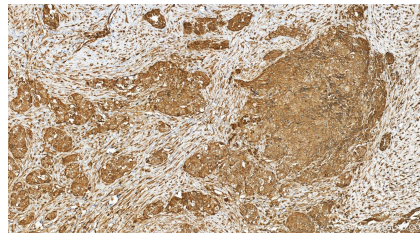
For technical support and original validation data for this product please contact:
T: 1 (888) 4PTGLAB (1-888-478-4522) (toll free in USA), or 1(312) 455-8498 (outside USA)
E: proteintech@ptglab.com
W: ptglab.com

This product is exclusively available under Proteintech Group brand and is not available to purchase from any other manufacturer.

Selected Validation Data



Various lysates were subjected to SDS PAGE followed by western blot with 25655-1-AP (PAN3 antibody) at dilution of 1:2000 incubated at room temperature for 1.5 hours.



Immunohistochemical analysis of paraffin-embedded human ovary cancer tissue slide using 25655-1-AP (PAN3 antibody) at dilution of 1:500 (under 20x lens). Heat mediated antigen retrieval with Tris-EDTA buffer (pH 9.0).