

For Research Use Only

# PAN3 Polyclonal antibody, PBS Only

Catalog Number: 25655-1-PBS



## Basic Information

**Catalog Number:**

25655-1-PBS

**Size:**

100ug, Concentration: 1 mg/ml by Nanodrop;

**Source:**

Rabbit

**Isotype:**

IgG

**Immunogen Catalog Number:**

AG22559

**GenBank Accession Number:**

BC128180

**GeneID (NCBI):**

255967

**UNIPROT ID:**

Q58A45

**Full Name:**

PAN3 poly(A) specific ribonuclease subunit homolog (S. cerevisiae)

**Calculated MW:**

887 aa, 96 kDa

**Observed MW:**

90-100kDa; 65-68 kDa

**Purification Method:**

Antigen affinity purification

## Applications

**Tested Applications:**

WB, IHC, Indirect ELISA

**Species Specificity:**

human, mouse

## Background Information

Shortening of the poly(A) tail in mRNA, called deadenylation, is the first rate-limiting step in mRNA turnover. PAN3 is the regulatory subunit of a cytoplasmic poly(A) nuclease complex that links the catalytic PAN2 subunit to the poly(A)-binding protein PABP, which stimulates PAN2-dependent deadenylation activity (PMID: 14583602). PAN3 has four isoforms, isoform1: 95 kDa; isoform2: 64 kDa, isoform3: 89 kDa and isoform4: 72 kDa. This antibody recognizes isoform 1/2/3.

## Storage

**Storage:**

Store at -80°C.

**Storage Buffer:**

PBS only, pH7.3

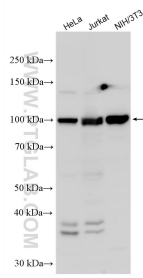
For technical support and original validation data for this product please contact:

T: 1 (888) 4PTGLAB (1-888-478-4522) (toll free in USA), or 1(312) 455-8498 (outside USA)

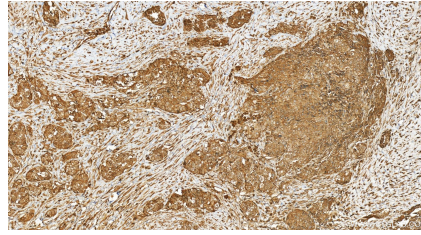
E: [proteintech@ptglab.com](mailto:proteintech@ptglab.com)  
W: [ptglab.com](http://ptglab.com)

**This product is exclusively available under Proteintech Group brand and is not available to purchase from any other manufacturer.**

## Selected Validation Data



Various lysates were subjected to SDS PAGE followed by western blot with 25655-1-AP (PAN3 antibody) at dilution of 1:3000 incubated at room temperature for 1.5 hours. This data was developed using the same antibody clone with 25655-1-PBS in a different storage buffer formulation.



Immunohistochemical analysis of paraffin-embedded human ovary cancer tissue slide using 25655-1-AP (PAN3 antibody) at dilution of 1:500 (under 20x lens). Heat mediated antigen retrieval with Tris-EDTA buffer (pH 9.0). This data was developed using the same antibody clone with 25655-1-PBS in a different storage buffer formulation.