

For Research Use Only

# LRRC29 Polyclonal antibody

Catalog Number: 25664-1-AP



## Basic Information

Catalog Number:

25664-1-AP

Size:

150ul, Concentration: 550 µg/ml by Nanodrop and 373 µg/ml by Bradford method using BSA as the standard;

Source:

Rabbit

Isotype:

IgG

Immunogen Catalog Number:

AG22577

GenBank Accession Number:

BC018785

GeneID (NCBI):

26231

UNIPROT ID:

Q8WV35

Full Name:

leucine rich repeat containing 29

Calculated MW:

223 aa, 24 kDa

Observed MW:

24 kDa

Purification Method:

Antigen affinity purification

Recommended Dilutions:

WB 1:200-1:1000

## Applications

Tested Applications:

WB, ELISA

Species Specificity:

human, mouse

Positive Controls:

WB : mouse liver tissue, mouse pancreas tissue

## Storage

Storage:

Store at -20°C. Stable for one year after shipment.

Storage Buffer:

PBS with 0.02% sodium azide and 50% glycerol pH 7.3.

Aliquoting is unnecessary for -20°C storage

\*\*\* 20ul sizes contain 0.1% BSA

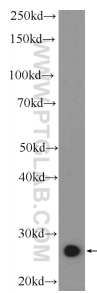
For technical support and original validation data for this product please contact:

T: 1 (888) 4PTGLAB (1-888-478-4522) (toll free in USA), or 1(312) 455-8498 (outside USA)

E: [proteintech@ptglab.com](mailto:proteintech@ptglab.com)  
W: [ptglab.com](http://ptglab.com)

This product is exclusively available under Proteintech Group brand and is not available to purchase from any other manufacturer.

## Selected Validation Data



mouse liver tissue were subjected to SDS PAGE followed by western blot with 25664-1-AP (LRRC29 Antibody) at dilution of 1:300 incubated at room temperature for 1.5 hours.