

For Research Use Only

MARVELD3 Polyclonal antibody

Catalog Number: 25667-1-AP **2 Publications**



Basic Information

| | | |
|--|---|---|
| Catalog Number: 25667-1-AP | GenBank Accession Number: BC013376 | Purification Method: Antigen affinity purification |
| Size: 150ul , Concentration: 900 µg/ml by Nanodrop and 320 µg/ml by Bradford method using BSA as the standard; | GeneID (NCBI): 91862 | Recommended Dilutions: WB 1:500-1:2000 IHC 1:500-1:2000 IF 1:50-1:500 |
| Source: Rabbit | Full Name: MARVEL domain containing 3 | |
| Isotype: IgG | Calculated MW: 401 aa, 45 kDa | |
| Immunogen Catalog Number: AG22492 | Observed MW: 40 kDa | |

Applications

| | |
|---|---|
| Tested Applications: IF, IHC, WB, ELISA | Positive Controls: WB : COLO 320 cells, IHC : human kidney tissue, IF : Caco-2 cells, |
| Cited Applications: WB | |
| Species Specificity: human | |
| Cited Species: human | |

Note-IHC: suggested antigen retrieval with TE buffer pH 9.0; (*) Alternatively, antigen retrieval may be performed with citrate buffer pH 6.0

Background Information

MARVELD3 (MARVEL domain-containing protein 3), a four-span transmembrane protein of about 40 kDa, is a tight junction-associated transmembrane protein of the occludin family (PMID: 20028514). MARVELD3 functions as a determinant of epithelial paracellular permeability properties. It has been reported that MARVELD3 couples tight junctions to the MEKK1-JNK pathway to regulate cell behavior and survival (PMID: 24567356).

Notable Publications

| Author | Pubmed ID | Journal | Application |
|---------------|-----------|---------------------|-------------|
| Ha-Young Park | 36529213 | Int J Biol Macromol | WB |
| Ha-Young Park | 36700348 | FEBS Open Bio | WB |

Storage

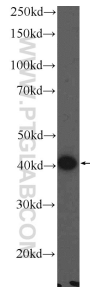
Storage:
Store at -20°C. Stable for one year after shipment.
Storage Buffer:
PBS with 0.02% sodium azide and 50% glycerol pH 7.3.
Aliquoting is unnecessary for -20°C storage

*** 20ul sizes contain 0.1% BSA

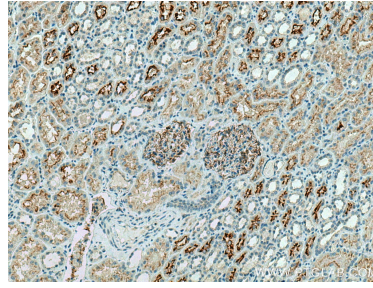
For technical support and original validation data for this product please contact:
T: 1 (888) 4PTGLAB (1-888-478-4522) (toll free in USA), or 1(312) 455-8498 (outside USA)
E: proteintech@ptglab.com
W: ptglab.com

This product is exclusively available under Proteintech Group brand and is not available to purchase from any other manufacturer.

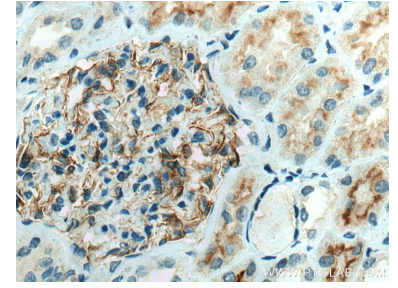
Selected Validation Data



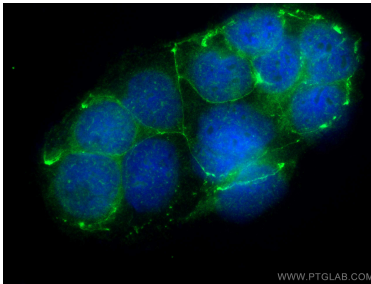
COLO 320 cells were subjected to SDS PAGE followed by western blot with 25667-1-AP (MARVELD3 Antibody) at dilution of 1:1000 incubated at room temperature for 1.5 hours.



Immunohistochemical analysis of paraffin-embedded human kidney tissue slide using 25667-1-AP (MARVELD3 antibody) at dilution of 1:1000 (under 10x lens). Heat mediated antigen retrieval with Tris-EDTA buffer (pH 9.0).



Immunohistochemical analysis of paraffin-embedded human kidney tissue slide using 25667-1-AP (MARVELD3 antibody) at dilution of 1:1000 (under 40x lens). Heat mediated antigen retrieval with Tris-EDTA buffer (pH 9.0).



Immunofluorescent analysis of (-20°C Ethanol) fixed Caco-2 cells using MARVELD3 antibody (25667-1-AP) at dilution of 1:200 and CoraLite®488-Conjugated AffiniPure Goat Anti-Rabbit IgG(H+L).