

For Research Use Only

OSGEPL1 Polyclonal antibody

Catalog Number: 25694-1-AP **1 Publications**



Basic Information

Catalog Number: 25694-1-AP	GenBank Accession Number: BC011904	Purification Method: Antigen affinity purification
Size: 150ul , Concentration: 450 µg/ml by Nanodrop and 260 µg/ml by Bradford method using BSA as the standard;	GeneID (NCBI): 64172	Recommended Dilutions: WB 1:500-1:2000 IHC 1:20-1:200
Source: Rabbit	Full Name: O-sialoglycoprotein endopeptidase-like 1	
Isotype: IgG	Calculated MW: 414 aa, 45 kDa	
Immunogen Catalog Number: AG22204	Observed MW: 45 kDa	

Applications

Tested Applications: IHC, WB, ELISA	Positive Controls: WB : HeLa cells, MCF-7 cells, NIH/3T3 cells
Cited Applications: WB	IHC : human colon tissue, human prostate hyperplasia tissue
Species Specificity: human, mouse	
Cited Species: human	

Note-IHC: suggested antigen retrieval with TE buffer pH 9.0; (*) Alternatively, antigen retrieval may be performed with citrate buffer pH 6.0

Background Information

Notable Publications

Author	Pubmed ID	Journal	Application
Huan Lin	29760464	Nat Commun	WB

Storage

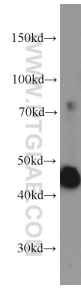
Storage:
Store at -20°C. Stable for one year after shipment.
Storage Buffer:
PBS with 0.02% sodium azide and 50% glycerol pH 7.3.
Aliquoting is unnecessary for -20°C storage

*** 20ul sizes contain 0.1% BSA

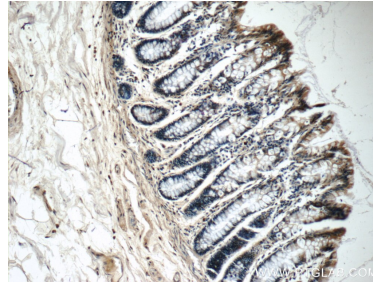
For technical support and original validation data for this product please contact:
T: 1 (888) 4PTGLAB (1-888-478-4522) (toll free in USA), or 1(312) 455-8498 (outside USA) E: proteintech@ptglab.com W: ptglab.com

This product is exclusively available under Proteintech Group brand and is not available to purchase from any other manufacturer.

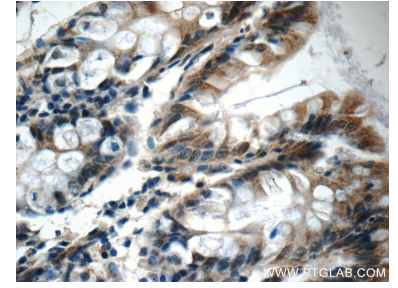
Selected Validation Data



HeLa cells were subjected to SDS PAGE followed by western blot with 25694-1-AP (OSGEPL1 Antibody) at dilution of 1:1000 incubated at room temperature for 1.5 hours.



Immunohistochemical analysis of paraffin-embedded human colon tissue slide using 25694-1-AP (OSGEPL1 Antibody) at dilution of 1:50 (under 10x lens).



Immunohistochemical analysis of paraffin-embedded human colon tissue slide using 25694-1-AP (OSGEPL1 Antibody) at dilution of 1:50 (under 40x lens).