

For Research Use Only

MAP6/STOP Polyclonal antibody

Catalog Number: 25717-1-AP



Basic Information

Catalog Number: 25717-1-AP	GenBank Accession Number: BC139780	Purification Method: Antigen affinity purification
Size: 150ul , Concentration: 250 ug/ml by Nanodrop;	GeneID (NCBI): 4135	Recommended Dilutions: WB 1:1000-1:6000
Source: Rabbit	UNIPROT ID: Q96JE9	IHC 1:50-1:500
Isotype: IgG	Full Name: microtubule-associated protein 6	IF/ICC 1:200-1:800
Immunogen Catalog Number: AG22471	Calculated MW: 813 aa, 87 kDa	
	Observed MW: 120 kDa	

Applications

Tested Applications:
WB, IHC, IF/ICC, ELISA

Species Specificity:
human, mouse

Note-IHC: suggested antigen retrieval with **TE buffer pH 9.0; (*)** Alternatively, antigen retrieval may be performed with **citrate buffer pH 6.0**

Positive Controls:

WB : mouse retina tissue, mouse brain tissue, mouse cerebellum tissue

IHC : mouse cerebellum tissue,

IF/ICC : PC-12 cells,

Background Information

MAP6, also named STOP protein, has been isolated from brain preparations but is also present in other tissues such as the skeletal muscles and heart. MAP6 is a calmodulin-binding and calmodulin-regulated protein that is involved in microtubule stabilization. Different isoforms of STOP protein arise from alternative mRNA splicing and transcription initiation sites using a single gene. The neuronal MAP6 isoforms N-STOP (120 kDa) and E-STOP (80 kDa), the astrocyte MAP6 isoform A-STOP (60 kDa), and a fibroblastic MAP6 isoform F-STOP (48 kDa) have been identified.

Storage

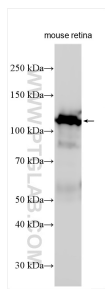
Storage:
Store at -20°C. Stable for one year after shipment.
Storage Buffer:
PBS with 0.02% sodium azide and 50% glycerol pH 7.3.
Aliquoting is unnecessary for -20°C storage

*** 20ul sizes contain 0.1% BSA

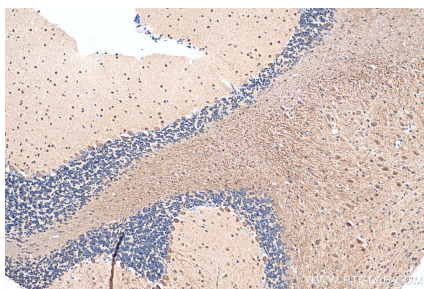
For technical support and original validation data for this product please contact:
T: 1 (888) 4PTGLAB (1-888-478-4522) (toll free in USA), or 1(312) 455-8498 (outside USA)
E: proteintech@ptglab.com
W: ptglab.com

This product is exclusively available under Proteintech Group brand and is not available to purchase from any other manufacturer.

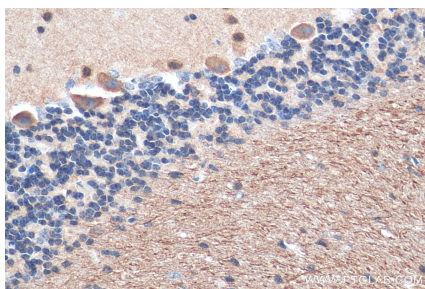
Selected Validation Data



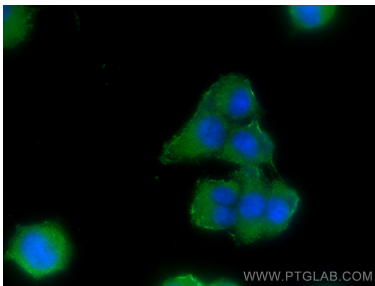
mouse retina tissue were subjected to SDS PAGE followed by western blot with 25717-1-AP (MAP6/STOP antibody) at dilution of 1:3000 incubated at room temperature for 1.5 hours.



Immunohistochemical analysis of paraffin-embedded mouse cerebellum tissue slide using 25717-1-AP (MAP6/STOP antibody) at dilution of 1:200 (under 10x lens). Heat mediated antigen retrieval with Tris-EDTA buffer (pH 9.0).



Immunohistochemical analysis of paraffin-embedded mouse cerebellum tissue slide using 25717-1-AP (MAP6/STOP antibody) at dilution of 1:200 (under 40x lens). Heat mediated antigen retrieval with Tris-EDTA buffer (pH 9.0).



Immunofluorescent analysis of (-20°C Methanol) fixed PC-12 cells using MAP6/STOP antibody (25717-1-AP) at dilution of 1:400 and CoraLite®488-Conjugated AffiniPure Goat Anti-Rabbit IgG(H+L).