

For Research Use Only

FAM135A Polyclonal antibody

Catalog Number:25718-1-AP



Basic Information

| | | |
|---|--|---|
| Catalog Number: 25718-1-AP | GenBank Accession Number: BC131782 | Purification Method: Antigen affinity purification |
| Size: 150ul , Concentration: 300 ug/ml by Nanodrop; | GeneID (NCBI): 57579 | Recommended Dilutions: IHC 1:50-1:500 IF/ICC 1:200-1:800 |
| Source: Rabbit | UNIPROT ID: Q9P2D6 | |
| Isotype: IgG | Full Name: family with sequence similarity 135, member A | |
| Immunogen Catalog Number: AG22472 | Calculated MW: 1515 aa, 170 kDa | |

Applications

| | |
|---|--|
| Tested Applications: IHC, IF/ICC, ELISA | Positive Controls: IHC : mouse cerebellum tissue, IF/ICC : A431 cells, U2OS cells |
| Species Specificity: human, mouse | |

Note-IHC: suggested antigen retrieval with TE buffer pH 9.0; (*) Alternatively, antigen retrieval may be performed with citrate buffer pH 6.0

Background Information

FAM135A (family with sequence similarity 135) also known as KIAA1411, is a gene in the RP25 locus that is situated between D6S1557 and D6S421. FAM135A is expressed in the retina, brain, skeletal muscle, pancreas, and lung, according to gene expression studies. FAM135A is linked to several tumor-related pathways and is strongly correlated with breast cancer cell invasion and migration (PMID: 36943627).

Storage

Storage:
Store at -20°C. Stable for one year after shipment.
Storage Buffer:
PBS with 0.02% sodium azide and 50% glycerol pH 7.3.
Aliquoting is unnecessary for -20°C storage

*** 20ul sizes contain 0.1% BSA

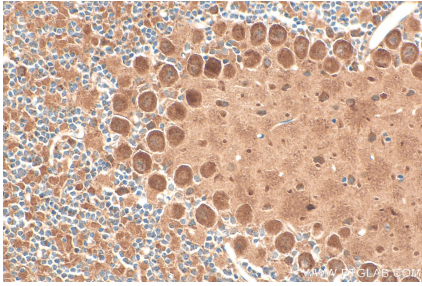
For technical support and original validation data for this product please contact:

T: 1 (888) 4PTGLAB (1-888-478-4522) (toll free in USA), or 1(312) 455-8498 (outside USA)

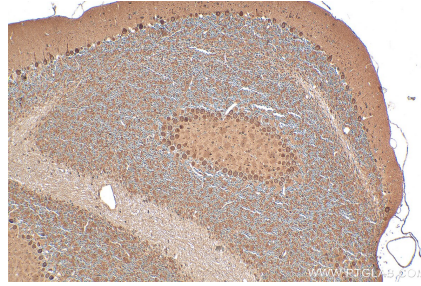
E: proteintech@ptglab.com
W: ptglab.com

This product is exclusively available under Proteintech Group brand and is not available to purchase from any other manufacturer.

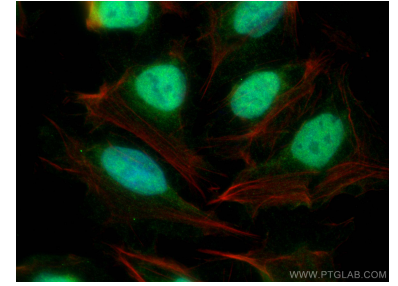
Selected Validation Data



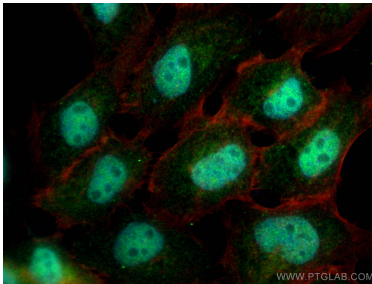
Immunohistochemical analysis of paraffin-embedded mouse cerebellum tissue slide using 25718-1-AP (FAM135A antibody) at dilution of 1:200 (under 40x lens). Heat mediated antigen retrieval with Tris-EDTA buffer (pH 9.0).



Immunohistochemical analysis of paraffin-embedded mouse cerebellum tissue slide using 25718-1-AP (FAM135A antibody) at dilution of 1:200 (under 10x lens). Heat mediated antigen retrieval with Tris-EDTA buffer (pH 9.0).



Immunofluorescent analysis of (4% PFA) fixed U2OS cells using FAM135A antibody (25718-1-AP) at dilution of 1:400 and CoraLite@488-Conjugated Goat Anti-Rabbit IgG(H+L) (SA00013-2), CL594-phalloidin (red).



Immunofluorescent analysis of (4% PFA) fixed A431 cells using FAM135A antibody (25718-1-AP) at dilution of 1:400 and CoraLite@488-Conjugated Goat Anti-Rabbit IgG(H+L) (SA00013-2), CL594-phalloidin (red).