

For Research Use Only

AZI1 Polyclonal antibody

Catalog Number: 25735-1-AP

Featured Product

11 Publications



Basic Information

Catalog Number: 25735-1-AP	GenBank Accession Number: BC136578	Purification Method: Antigen affinity purification
Size: 150ul , Concentration: 1200 µg/ml by Nanodrop;	GeneID (NCBI): 22994	Recommended Dilutions: WB 1:500-1:2000 IF 1:20-1:200
Source: Rabbit	Full Name: 5-azacytidine induced 1	
Isotype: IgG	Calculated MW: 1083 aa, 122 kDa	
Immunogen Catalog Number: AG22699	Observed MW: 131 kDa	

Applications

Tested Applications: IF, WB, ELISA	Positive Controls: WB : mouse testis tissue, IF : HeLa cells,
Cited Applications: IF, IP, WB	
Species Specificity: human, mouse	
Cited Species: human, mouse	

Background Information

AZI1, also named as CEP131 and KIAA1118, may play a role in spermatogenesis. It is located at the ciliary base and required for cilium formation.

Notable Publications

Author	Pubmed ID	Journal	Application
Zhenguang Ying	36280838	BMC Biol	WB
Yu-Ying Chao	36251015	J Cell Physiol	
Xin Li	28361952	Nat Commun	WB, IF, IP

Storage

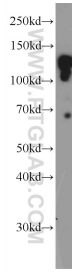
Storage:
Store at -20°C. Stable for one year after shipment.
Storage Buffer:
PBS with 0.02% sodium azide and 50% glycerol pH 7.3.
Aliquoting is unnecessary for -20°C storage

*** 20ul sizes contain 0.1% BSA

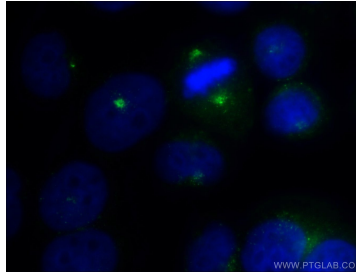
For technical support and original validation data for this product please contact:
T: 1 (888) 4PTGLAB (1-888-478-4522) (toll free in USA), or 1(312) 455-8498 (outside USA)
E: proteintech@ptglab.com
W: ptglab.com

This product is exclusively available under Proteintech Group brand and is not available to purchase from any other manufacturer.

Selected Validation Data



mouse testis tissue were subjected to SDS PAGE followed by western blot with 25735-1-AP (AZ11 Antibody) at dilution of 1:1000 incubated at room temperature for 1.5 hours.



Immunofluorescent analysis of HeLa cells using 25735-1-AP (AZ11 antibody) at dilution of 1:50 and Alexa Fluor 488-conjugated AffiniPure Goat Anti-Rabbit IgG(H+L).