

For Research Use Only

# ZCCHC2 Polyclonal antibody, PBS Only

Catalog Number: 25741-1-PBS



## Basic Information

Catalog Number:

25741-1-PBS

Size:

100ug, Concentration: 1 mg/ml by Nanodrop;

Source:

Rabbit

Isotype:

IgG

Immunogen Catalog Number:

AG22744

GenBank Accession Number:

BC006340

GeneID (NCBI):

54877

UNIPROT ID:

Q9C0B9

Full Name:

zinc finger, CCHC domain containing 2

Calculated MW:

1178 aa, 126 kDa

Observed MW:

150 kDa

Purification Method:

Antigen affinity purification

## Applications

Tested Applications:

IP, Indirect ELISA

Species Specificity:

human

## Background Information

ZCCHC2 is a poorly characterized protein of 126 kDa with long intrinsically disordered regions, a PX domain, and a CCHC-type zinc-finger (ZnF) domain. ZCCHC2 is distantly related to ZCCHC14 but lacks the SAM domain that is known to interact with the CNGGN pentaloop in 1E and PRE. ZCCHC2 is a critical host factor for K5. ZCCHC2 recruits the terminal nucleotidyl transferase TENT4 to elongate poly(A) tails with mixed sequences, delaying deadenylation. The observed molecular weight is consistent with what has been described in the literature (PMID: 37413987).

## Storage

Storage:

Store at -80°C.

Storage Buffer:

PBS Only

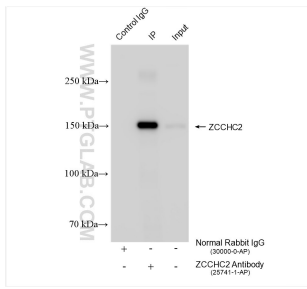
For technical support and original validation data for this product please contact:

T: 1 (888) 4PTGLAB (1-888-478-4522) (toll free in USA), or 1(312) 455-8498 (outside USA)

E: [proteintech@ptglab.com](mailto:proteintech@ptglab.com)  
W: [ptglab.com](http://ptglab.com)

This product is exclusively available under Proteintech Group brand and is not available to purchase from any other manufacturer.

## Selected Validation Data



IP result of anti-ZCCHC2 (IP:25741-1-AP, 4 $\mu$ g; Detection:25741-1-AP 1:500) with HeLa cells lysate 1800  $\mu$ g. This data was developed using the same antibody clone with 25741-1-PBS in a different storage buffer formulation.