

For Research Use Only

EPHA2 Polyclonal antibody

Catalog Number: 25749-1-AP

1 Publications



Basic Information

Catalog Number:

25749-1-AP

Size:

150ul, Concentration: 350 ug/ml by Nanodrop;

Source:

Rabbit

Isotype:

IgG

Immunogen Catalog Number:

AG22661

GenBank Accession Number:

BC037166

GeneID (NCBI):

1969

UNIPROT ID:

P29317

Full Name:

EPH receptor A2

Calculated MW:

976 aa, 108 kDa

Observed MW:

125-130 kDa

Purification Method:

Antigen affinity purification

Recommended Dilutions:

WB 1:500-1:2000

Applications

Tested Applications:

WB, ELISA

Cited Applications:

WB

Species Specificity:

human

Cited Species:

human

Positive Controls:

WB : A375 cells, A431 cells

Background Information

EPHA2 (Ephrin type-A receptor 2) belongs to the receptor tyrosine kinase (RTK) family, with 16 known receptors and 9 known membrane-bound ligands in all species. Based on the extracellular domain sequence homology, structure, and binding affinity, Eph receptors and their ephrin ligands can be divided into A and B subtypes (PMID: 33962882). EPHA2 contains a conserved N-terminal ligand-bound extracellular domain, a transmembrane domain, and a conserved tyrosine kinase domain (PMID: 8070404).

Notable Publications

Author	Pubmed ID	Journal	Application
Yingjen Jeffrey Wu	28739685	Anticancer Res	WB

Storage

Storage:

Store at -20°C. Stable for one year after shipment.

Storage Buffer:

PBS with 0.02% sodium azide and 50% glycerol pH 7.3.

Aliquoting is unnecessary for -20°C storage

*** 20ul sizes contain 0.1% BSA

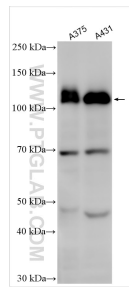
For technical support and original validation data for this product please contact:

T: 1 (888) 4PTGLAB (1-888-478-4522) (toll free in USA), or 1(312) 455-8498 (outside USA)

E: proteintech@ptglab.com
W: ptglab.com

This product is exclusively available under Proteintech Group brand and is not available to purchase from any other manufacturer.

Selected Validation Data



Various lysates were subjected to SDS PAGE followed by western blot with 25749-1-AP (EPHA2 antibody) at dilution of 1:1000 incubated at room temperature for 1.5 hours.