

For Research Use Only

# COX20 Polyclonal antibody

Catalog Number: 25752-1-AP **3 Publications**



## Basic Information

<b>Catalog Number:</b> 25752-1-AP	<b>GenBank Accession Number:</b> BC018519	<b>Purification Method:</b> Antigen affinity purification
<b>Size:</b> 150ul, Concentration: 750 µg/ml by Nanodrop and 393 µg/ml by Bradford method using BSA as the standard;	<b>GeneID (NCBI):</b> 116228	<b>Recommended Dilutions:</b> WB 1:500-1:2000 IHC 1:20-1:200 IF 1:20-1:200
<b>Source:</b> Rabbit	<b>Full Name:</b> family with sequence similarity 36, member A	
<b>Isotype:</b> IgG	<b>Calculated MW:</b> 118 aa, 13 kDa	
<b>Immunogen Catalog Number:</b> AG22520	<b>Observed MW:</b> ~16 kDa	

## Applications

<b>Tested Applications:</b> IF, IHC, WB, ELISA	<b>Positive Controls:</b> WB : PC-3 cells,
<b>Cited Applications:</b> IF, IHC, WB	<b>IHC :</b> human prostate cancer tissue, human endometrial cancer tissue
<b>Species Specificity:</b> human	<b>IF :</b> HeLa cells, PC-3 cells
<b>Cited Species:</b> human, mouse	

**Note-IHC: suggested antigen retrieval with TE buffer pH 9.0; (\*) Alternatively, antigen retrieval may be performed with citrate buffer pH 6.0**

## Background Information

COX20, also name as FAM36A, belongs to the COX20 family. Mutations in COX20 are a novel cause of recessively inherited.

## Notable Publications

Author	Pubmed ID	Journal	Application
Sridevi Challa	34314702	Cell	WB,IF
Shin-Haw Lee	33262348	Sci Data	WB,IF
Ji Wu	37091853	Front Endocrinol (Lausanne)	WB,IHC

## Storage

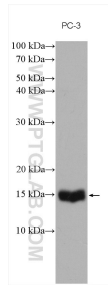
**Storage:**  
Store at -20°C. Stable for one year after shipment.  
**Storage Buffer:**  
PBS with 0.02% sodium azide and 50% glycerol pH 7.3.  
Aliquoting is unnecessary for -20°C storage

**\*\*\* 20ul sizes contain 0.1% BSA**

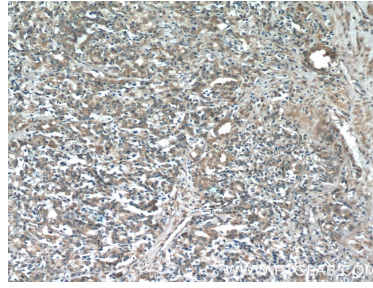
For technical support and original validation data for this product please contact:  
T: 1 (888) 4PTGLAB (1-888-478-4522) (toll free in USA), or 1(312) 455-8498 (outside USA)  
E: proteintech@ptglab.com  
W: ptglab.com

**This product is exclusively available under Proteintech Group brand and is not available to purchase from any other manufacturer.**

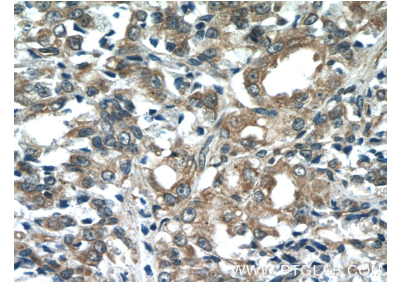
## Selected Validation Data



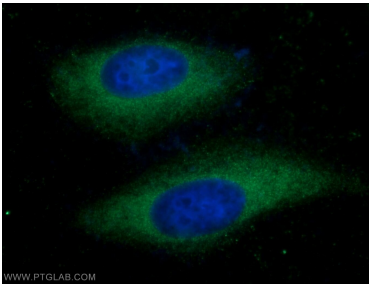
PC-3 cells were subjected to SDS PAGE followed by western blot with 25752-1-AP (COX20 antibody) at dilution of 1:1000 incubated at room temperature for 1.5 hours.



Immunohistochemical analysis of paraffin-embedded human prostate cancer tissue slide using 25752-1-AP (COX20 antibody at dilution of 1:50 (under 10x lens).



Immunohistochemical analysis of paraffin-embedded human prostate cancer tissue slide using 25752-1-AP (COX20 antibody at dilution of 1:50 (under 40x lens).



Immunofluorescent analysis of HeLa cells using 25752-1-AP (COX20 antibody) at dilution of 1:50 and Alexa Fluor 488-conjugated AffiniPure Goat Anti-Rabbit IgG(H+L).