

For Research Use Only

G6PC Polyclonal antibody

Catalog Number: 25771-1-AP

2 Publications



Basic Information

Catalog Number:

25771-1-AP

Size:

150ul, Concentration: 700 ug/ml by Nanodrop;

Source:

Rabbit

Isotype:

IgG

Immunogen Catalog Number:

AG22683

GenBank Accession Number:

BC136369

GeneID (NCBI):

2538

UNIPROT ID:

P35575

Full Name:

glucose-6-phosphatase, catalytic subunit

Observed MW:

42 kDa

Purification Method:

Antigen affinity purification

Recommended Dilutions:

WB 1:1000-1:6000

Applications

Tested Applications:

WB, ELISA

Cited Applications:

WB

Species Specificity:

human, rat

Cited Species:

mouse

Positive Controls:

WB : HepG2 cells, L02 cells, rat liver tissue

Background Information

Glucose-6-phosphatase- α (G6PC) is a key enzyme in glucose homeostasis that catalyzes the hydrolysis of glucose-6-phosphate to glucose and phosphate in the terminal step of gluconeogenesis and glycogenolysis. G6PC activity is restricted to the liver, the kidney cortex, and the small intestine and confers on these three organs the capacity to release glucose into the systemic circulation (PMID: 21983240). The encoded enzyme is anchored to the ER by nine transmembrane helices with the amino (N)-terminus in the lumen and the carboxyl (C)-terminus in the cytoplasm (PMID: 15542400).

Notable Publications

Author	Pubmed ID	Journal	Application
Jianglan Long	38834117	Int J Biol Macromol	WB
Yuzuru Iizuka	37918450	J Nutr Biochem	WB

Storage

Storage:

Store at -20°C. Stable for one year after shipment.

Storage Buffer:

PBS with 0.02% sodium azide and 50% glycerol pH 7.3.

Aliquoting is unnecessary for -20°C storage

*** 20ul sizes contain 0.1% BSA

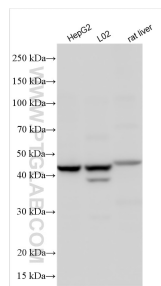
For technical support and original validation data for this product please contact:

T: 1 (888) 4PTGLAB (1-888-478-4522) (toll free in USA), or 1(312) 455-8498 (outside USA)

E: proteintech@ptglab.com
W: ptglab.com

This product is exclusively available under Proteintech Group brand and is not available to purchase from any other manufacturer.

Selected Validation Data



Various lysates were subjected to SDS PAGE followed by western blot with 25771-1-AP (G6PC antibody) at dilution of 1:3000 incubated at room temperature for 1.5 hours.