

For Research Use Only

LRP2BP Polyclonal antibody

Catalog Number: 25783-1-AP



Basic Information

Catalog Number:

25783-1-AP

Size:

150ul, Concentration: 500 ug/ml by Nanodrop and 253 ug/ml by Bradford method using BSA as the standard;

Source:

Rabbit

Isotype:

IgG

Immunogen Catalog Number:

AG22779

GenBank Accession Number:

BC152444

GeneID (NCBI):

55805

UNIPROT ID:

Q9P2M1

Full Name:

LRP2 binding protein

Calculated MW:

347 aa, 40 kDa

Observed MW:

45 kDa

Purification Method:

Antigen affinity purification

Recommended Dilutions:

WB 1:500-1:2000

IHC 1:50-1:500

Applications

Tested Applications:

WB, IHC, ELISA

Species Specificity:

human, rat

Note-IHC: suggested antigen retrieval with TE buffer pH 9.0; (*) Alternatively, antigen retrieval may be performed with citrate buffer pH 6.0

Positive Controls:

WB : A549 cells, Jurkat cells, rat lung tissue

IHC : human cerebellum tissue,

Storage

Storage:

Store at -20°C. Stable for one year after shipment.

Storage Buffer:

PBS with 0.02% sodium azide and 50% glycerol pH 7.3.

Aliquoting is unnecessary for -20°C storage

*** 20ul sizes contain 0.1% BSA

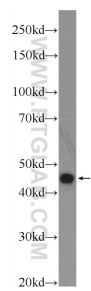
For technical support and original validation data for this product please contact:

T: 1 (888) 4PTGLAB (1-888-478-4522) (toll free in USA), or 1(312) 455-8498 (outside USA)

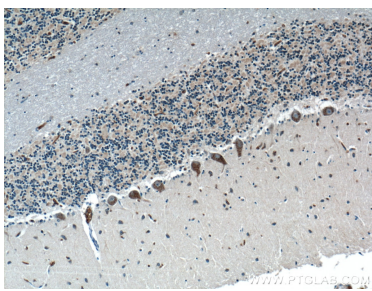
E: proteintech@ptglab.com
W: ptglab.com

This product is exclusively available under Proteintech Group brand and is not available to purchase from any other manufacturer.

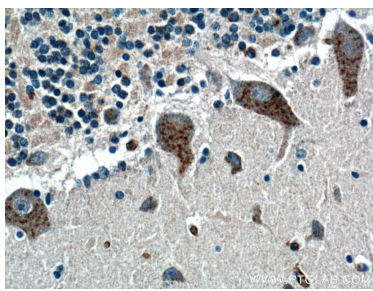
Selected Validation Data



A549 cells were subjected to SDS PAGE followed by western blot with 25783-1-AP (LRP2BP Antibody) at dilution of 1:1000 incubated at room temperature for 1.5 hours.



Immunohistochemical analysis of paraffin-embedded human cerebellum tissue slide using 25783-1-AP (LRP2BP antibody) at dilution of 1:200 (under 10x lens).



Immunohistochemical analysis of paraffin-embedded human cerebellum tissue slide using 25783-1-AP (LRP2BP antibody) at dilution of 1:200 (under 40x lens).