

For Research Use Only

PLA2G12B Polyclonal antibody

Catalog Number: 25799-1-AP

Featured Product



Basic Information

Catalog Number:

25799-1-AP

Size:

150ul, Concentration: 900 ug/ml by Nanodrop;

Source:

Rabbit

Isotype:

IgG

Immunogen Catalog Number:

AG22877

GenBank Accession Number:

BC111946

GeneID (NCBI):

84647

UNIPROT ID:

Q9BX93

Full Name:

phospholipase A2, group XIIIB

Calculated MW:

195 aa, 22 kDa

Observed MW:

21-22 kDa

Purification Method:

Antigen affinity purification

Recommended Dilutions:

WB 1:500-1:3000

Applications

Tested Applications:

WB, ELISA

Species Specificity:

human, mouse, rat

Positive Controls:

WB : mouse liver tissue, HepG2 cells, HuH-7 cells, rat liver tissue

Background Information

Phospholipase A2 (PLA2) enzymes catalyze hydrolysis of glycolipids to release free fatty acids and lysophospholipids. PLA2G12B is a secreted group XIIIB secretory phospholipase A2-like protein belonging to the PLA2 family, but it is catalytically inactive due to an amino acid change in its active site and has altered phospholipid-binding properties (PMID: 14516201). It is located outside the cell membranes and strongly expressed in liver, small intestine and kidney, and recently reports revealed that Pla2g12b gene may be implicated in HDL cholesterol levels and metabolism (PMID: 22912808). The calculated molecular weight of PLA2G12B is 21 kDa.

Storage

Storage:

Store at -20°C. Stable for one year after shipment.

Storage Buffer:

PBS with 0.02% sodium azide and 50% glycerol pH 7.3.

Aliquoting is unnecessary for -20°C storage

*** 20ul sizes contain 0.1% BSA

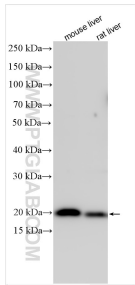
For technical support and original validation data for this product please contact:

T: 1 (888) 4PTGLAB (1-888-478-4522) (toll free in USA), or 1(312) 455-8498 (outside USA)

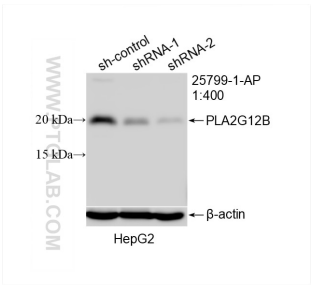
E: proteintech@ptglab.com
W: ptglab.com

This product is exclusively available under Proteintech Group brand and is not available to purchase from any other manufacturer.

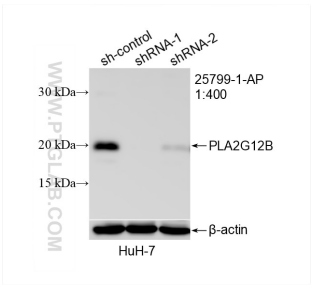
Selected Validation Data



Various lysates were subjected to SDS PAGE followed by western blot with 25799-1-AP (PLA2G12B antibody) at dilution of 1:1500 incubated at room temperature for 1.5 hours.



WB result of PLA2G12B antibody (25799-1-AP; 1:400; incubated at room temperature for 1.5 hours) with sh-Control and sh-PLA2G12B transfected HepG2 cells.



WB result of PLA2G12B antibody (25799-1-AP; 1:400; incubated at room temperature for 1.5 hours) with sh-Control and sh-PLA2G12B transfected HuH-7 cells.