

For Research Use Only

# CCDC33 Polyclonal antibody

Catalog Number: 25822-1-AP



## Basic Information

### Catalog Number:

25822-1-AP

### Size:

150ul, Concentration: 400 ug/ml by Nanodrop;

### Source:

Rabbit

### Isotype:

IgG

### Immunogen Catalog Number:

AG22893

### GenBank Accession Number:

BC025689

### GeneID (NCBI):

80125

### UNIPROT ID:

Q8N5R6

### Full Name:

coiled-coil domain containing 33

### Calculated MW:

958 aa, 107 kDa

### Observed MW:

85 kDa

### Purification Method:

Antigen affinity purification

### Recommended Dilutions:

WB: 1:500-1:2000

IP: 0.5-4.0 ug for 1.0-3.0 mg of total protein lysate

## Applications

### Tested Applications:

WB, IP, ELISA

### Species Specificity:

human, mouse, rat

### Positive Controls:

WB : rat testis tissue,

IP : mouse testis tissue,

## Background Information

The human CCDC33 gene was reported to encode a cancer/testis (CT) antigen, which is located on 15q24.1, spans a region of 99.8 kb, and consists of 20 exons (PMID: 28639886). CCDC33 is predominantly expressed in the testis and undergoes alternative splicing to produce at least 5 different transcripts (37kda, 41kda, 85kda, 107kda, 114kda). Human CCDC33 was reported to be a cancer/testis (CT) protein. Abundant expression of Ccdc33 is evident during mouse spermatogenesis (PMID: 33942254).

## Storage

### Storage:

Store at -20°C. Stable for one year after shipment.

### Storage Buffer:

PBS with 0.02% sodium azide and 50% glycerol, pH7.3

Aliquoting is unnecessary for -20°C storage

\*\*\* 20ul sizes contain 0.1% BSA

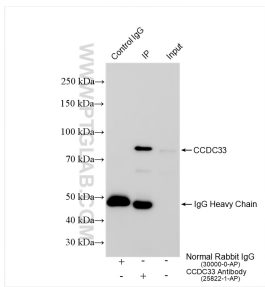
For technical support and original validation data for this product please contact:

T: 1 (888) 4PTGLAB (1-888-478-4522) (toll free in USA), or 1(312) 455-8498 (outside USA)

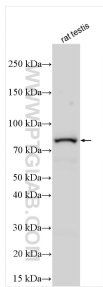
E: [proteintech@ptglab.com](mailto:proteintech@ptglab.com)  
W: [ptglab.com](http://ptglab.com)

This product is exclusively available under Proteintech Group brand and is not available to purchase from any other manufacturer.

## Selected Validation Data



IP result of anti-CCDC33 (IP:25822-1-AP, 4ug; Detection:25822-1-AP 1:600) with mouse testis tissue lysate 1800 ug.



Various lysates were subjected to SDS PAGE followed by western blot with 25822-1-AP (CCDC33 antibody) at dilution of 1:1000 incubated at room temperature for 1.5 hours.