

For Research Use Only

# C21orf45 Polyclonal antibody

Catalog Number: 25832-1-AP

1 Publications



## Basic Information

### Catalog Number:

25832-1-AP

### Size:

150ul, Concentration: 350 ug/ml by Nanodrop and 233 ug/ml by Bradford method using BSA as the standard;

### Source:

Rabbit

### Isotype:

IgG

### Immunogen Catalog Number:

AG22922

### GenBank Accession Number:

BC042917

### GeneID (NCBI):

54069

### UNIPROT ID:

Q9NYP9

### Full Name:

chromosome 21 open reading frame 45

### Calculated MW:

233 aa, 26 kDa

### Observed MW:

105 kDa

### Purification Method:

Antigen affinity purification

### Recommended Dilutions:

WB 1:200-1:1000

IF/ICC 1:200-1:800

## Applications

### Tested Applications:

WB, IF/ICC, ELISA

### Cited Applications:

WB, IF

### Species Specificity:

human, mouse

### Cited Species:

human, mouse

### Positive Controls:

WB : HeLa cells,

IF/ICC : HepG2 cells,

## Background Information

C21orf45, also named as MIS18A, C21orf46 and FASP1, is required for recruitment of CENPA to centromeres and normal chromosome segregation during mitosis. C21orf45 has dimer (~52 kDa) and heterodimer (~105 kDa) forms.

## Notable Publications

Author	Pubmed ID	Journal	Application
Shi-Yue Sun	33645631	Br J Pharmacol	IF, WB

## Storage

### Storage:

Store at -20°C. Stable for one year after shipment.

### Storage Buffer:

PBS with 0.02% sodium azide and 50% glycerol pH 7.3.

Aliquoting is unnecessary for -20°C storage

\*\*\* 20ul sizes contain 0.1% BSA

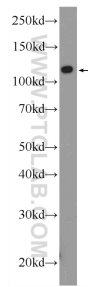
For technical support and original validation data for this product please contact:

T: 1 (888) 4PTGLAB (1-888-478-4522) (toll free in USA), or 1(312) 455-8498 (outside USA)

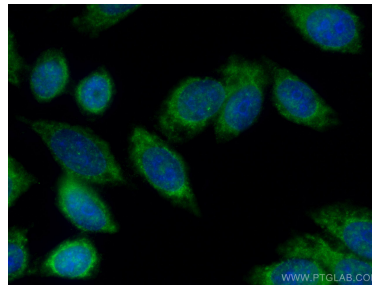
E: [proteintech@ptglab.com](mailto:proteintech@ptglab.com)  
W: [ptglab.com](http://ptglab.com)

This product is exclusively available under Proteintech Group brand and is not available to purchase from any other manufacturer.

## Selected Validation Data



HeLa cells were subjected to SDS PAGE followed by western blot with 25832-1-AP (C21orf45 Antibody) at dilution of 1:300 incubated at room temperature for 1.5 hours.



Immunofluorescent analysis of (-20°C Methanol) fixed HepG2 cells using C21orf45 antibody (25832-1-AP) at dilution of 1:400 and CoraLite® 488-Conjugated AffiniPure Goat Anti-Rabbit IgG(H+L).