

For Research Use Only

Caspr2 Polyclonal antibody

Catalog Number: 25838-1-AP



Basic Information

Catalog Number: 25838-1-AP	GenBank Accession Number: BC113373	Purification Method: Antigen affinity purification
Size: 150ul , Concentration: 450 µg/ml by Nanodrop;	GeneID (NCBI): 26047	Recommended Dilutions: WB 1:1000-1:4000
Source: Rabbit	Full Name: contactin associated protein-like 2	
Isotype: IgG	Calculated MW: 1331 aa, 148 kDa	
Immunogen Catalog Number: AG22844	Observed MW: 148 kDa	

Applications

Tested Applications: WB, ELISA	Positive Controls: WB : mouse brain tissue, pig brain tissue, rat brain tissue
Species Specificity: human, mouse, rat, pig	

Background Information

Caspr2 is a member of the neurexin family which functions in the vertebrate nervous system as cell adhesion molecules and receptors. This protein, like other neurexin proteins, contains epidermal growth factor repeats and laminin G domains. In addition, it includes an F5/8 type C domain, discoidin/neuropilin- and fibrinogen-like domains, thrombospondin N-terminal-like domains and a putative PDZ binding site. This protein is localized at the juxtaparanodes of myelinated axons, and mediates interactions between neurons and glia during nervous system development and is also involved in localization of potassium channels within differentiating axons. This gene encompasses almost 1.5% of chromosome 7 and is one of the largest genes in the human genome. It is directly bound and regulated by forkhead box protein P2, a transcription factor related to speech and language development.

Storage

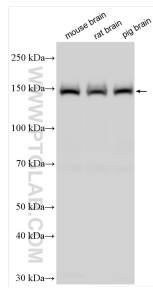
Storage:
Store at -20°C. Stable for one year after shipment.
Storage Buffer:
PBS with 0.02% sodium azide and 50% glycerol pH 7.3.
Aliquoting is unnecessary for -20°C storage

*** 20ul sizes contain 0.1% BSA

For technical support and original validation data for this product please contact:
T: 1 (888) 4PTGLAB (1-888-478-4522) (toll free in USA), or 1(312) 455-8498 (outside USA)
E: proteintech@ptglab.com
W: ptglab.com

This product is exclusively available under Proteintech Group brand and is not available to purchase from any other manufacturer.

Selected Validation Data



Various lysates were subjected to SDS PAGE followed by western blot with 25838-1-AP (Caspr2 antibody) at dilution of 1:2000 incubated at room temperature for 1.5 hours.