

For Research Use Only

# RAB11FIP3 Polyclonal antibody

Catalog Number: 25843-1-AP

Featured Product

5 Publications



## Basic Information

### Catalog Number:

25843-1-AP

### Size:

150ul, Concentration: 750 ug/ml by Nanodrop and 260 ug/ml by Bradford method using BSA as the standard;

### Source:

Rabbit

### Isotype:

IgG

### Immunogen Catalog Number:

AG22937

### GenBank Accession Number:

BC051360

### GeneID (NCBI):

9727

### UNIPROT ID:

O75154

### Full Name:

RAB11 family interacting protein 3 (class II)

### Calculated MW:

756 aa, 82 kDa

### Observed MW:

82 kDa

### Purification Method:

Antigen affinity purification

### Recommended Dilutions:

WB 1:200-1:1000

IHC 1:50-1:500

## Applications

### Tested Applications:

WB, IHC, ELISA

### Cited Applications:

WB, IF

### Species Specificity:

human, mouse, rat

### Cited Species:

human, mouse

**Note-IHC: suggested antigen retrieval with TE buffer pH 9.0; (\*) Alternatively, antigen retrieval may be performed with citrate buffer pH 6.0**

### Positive Controls:

WB: rat brain tissue, mouse brain tissue

IHC: human kidney tissue,

## Notable Publications

Author	Pubmed ID	Journal	Application
Nicholas V G Iannantuono	34043006	J Cell Sci	IF
Nicholas V G Iannantuono	34152390	J Cell Sci	IF
Vijay Walia	31204173	Dev Cell	WB,IF

## Storage

### Storage:

Store at -20°C. Stable for one year after shipment.

### Storage Buffer:

PBS with 0.02% sodium azide and 50% glycerol, pH7.3

Aliquoting is unnecessary for -20°C storage

\*\*\* 20ul sizes contain 0.1% BSA

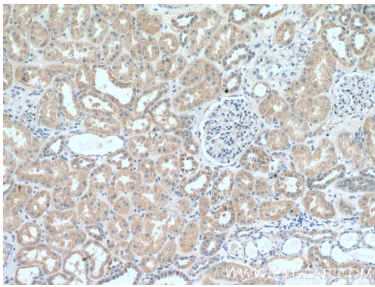
For technical support and original validation data for this product please contact:

T: 1 (888) 4PTGLAB (1-888-478-4522) (toll free in USA), or 1(312) 455-8498 (outside USA)

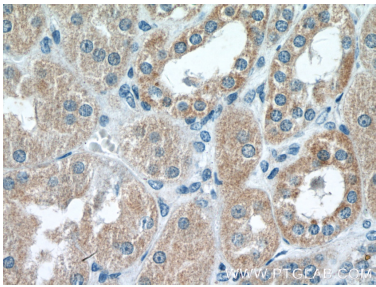
E: [proteintech@ptglab.com](mailto:proteintech@ptglab.com)  
W: [ptglab.com](http://ptglab.com)

This product is exclusively available under Proteintech Group brand and is not available to purchase from any other manufacturer.

Selected Validation Data



Immunohistochemical analysis of paraffin-embedded human kidney tissue slide using 25843-1-AP (RAB11FIP3 antibody) at dilution of 1:200 (under 10x lens).



Immunohistochemical analysis of paraffin-embedded human kidney tissue slide using 25843-1-AP (RAB11FIP3 antibody) at dilution of 1:200 (under 40x lens).



rat brain tissue were subjected to SDS PAGE followed by western blot with 25843-1-AP (RAB11FIP3 Antibody) at dilution of 1:300 incubated at room temperature for 1.5 hours.