

For Research Use Only

# TUBGCP2 Polyclonal antibody

Catalog Number: 25856-1-AP **1 Publications**



## Basic Information

<b>Catalog Number:</b> 25856-1-AP	<b>GenBank Accession Number:</b> BC093770	<b>Purification Method:</b> Antigen affinity purification
<b>Size:</b> 150ul , Concentration: 400 µg/ml by Nanodrop and 300 µg/ml by Bradford method using BSA as the standard;	<b>GeneID (NCBI):</b> 10844	<b>Recommended Dilutions:</b> WB 1:500-1:1000 IP 0.5-4.0 ug for 1.0-3.0 mg of total protein lysate IHC 1:50-1:500
<b>Source:</b> Rabbit	<b>Full Name:</b> tubulin, gamma complex associated protein 2	
<b>Isotype:</b> IgG	<b>Calculated MW:</b> 902 aa, 103 kDa	
<b>Immunogen Catalog Number:</b> AG23066	<b>Observed MW:</b> 103 kDa	

## Applications

<b>Tested Applications:</b> IHC, IP, WB, ELISA	<b>Positive Controls:</b> WB : HEK-293 cells, HeLa cells, U2OS cells
<b>Cited Applications:</b> IF	<b>IP :</b> HeLa cells,
<b>Species Specificity:</b> human, mouse	<b>IHC :</b> mouse testis tissue,
<b>Cited Species:</b> human	

**Note-IHC: suggested antigen retrieval with TE buffer pH 9.0; (\*) Alternatively, antigen retrieval may be performed with citrate buffer pH 6.0**

## Background Information

TUBGCP2 (tubulin-gamma-complex-associated protein 2) s TUBGCP2 is a core component of the g-TuRC nucleation complex (PMID: 3345861). Pathogenic variants in TUBGCP2 cause an autosomal recessive neurodevelopmental trait consisting of a neuronal migration disorder (PMID: 31630790).

## Notable Publications

Author	Pubmed ID	Journal	Application
Franziska Woerz	38122899	Mol Cell Proteomics	IF

## Storage

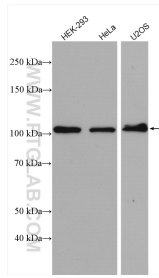
**Storage:**  
Store at -20°C. Stable for one year after shipment.  
**Storage Buffer:**  
PBS with 0.02% sodium azide and 50% glycerol pH 7.3.  
Aliquoting is unnecessary for -20°C storage

\*\*\* 20ul sizes contain 0.1% BSA

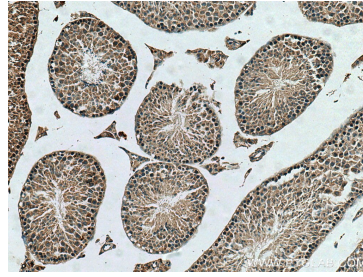
For technical support and original validation data for this product please contact:  
T: 1 (888) 4PTGLAB (1-888-478-4522) (toll free in USA), or 1(312) 455-8498 (outside USA)  
E: proteintech@ptglab.com  
W: ptglab.com

This product is exclusively available under Proteintech Group brand and is not available to purchase from any other manufacturer.

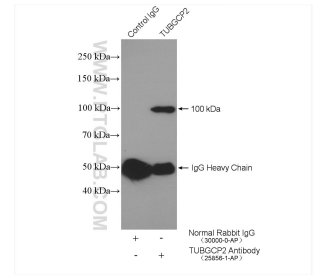
## Selected Validation Data



Various lysates were subjected to SDS PAGE followed by western blot with 25856-1-AP (TUBGCP2 antibody) at dilution of 1:600 incubated at room temperature for 1.5 hours.



Immunohistochemical analysis of paraffin-embedded mouse testis tissue slide using 25856-1-AP (TUBGCP2 antibody) at dilution of 1:200 (under 10x lens). Heat mediated antigen retrieval with Tris-EDTA buffer (pH 9.0).



IP result of anti-TUBGCP2 (IP:25856-1-AP, 4ug; Detection:25856-1-AP 1:500) with HeLa cells lysate 3920 ug.