

For Research Use Only

# PHF23 Polyclonal antibody, PBS Only

Catalog Number: 25862-1-PBS

Featured Product



## Basic Information

**Catalog Number:**

25862-1-PBS

**Size:**

100ug, Concentration: 1 mg/ml by Nanodrop;

**Source:**

Rabbit

**Isotype:**

IgG

**Immunogen Catalog Number:**

AG23044

**GenBank Accession Number:**

BC002509

**GeneID (NCBI):**

79142

**UNIPROT ID:**

Q9BUL5

**Full Name:**

PHD finger protein 23

**Calculated MW:**

403 aa, 44 kDa

**Observed MW:**

~65 kDa

**Purification Method:**

Antigen affinity purification

## Applications

**Tested Applications:**

WB, IF/ICC, Indirect ELISA

**Species Specificity:**

human

## Background Information

PHD finger protein 23 (PHF23), also known as hJUNE-1b, belongs to the PHF23 family. As a putative epigenetic reader, the PHD domain of PHF23 specifically binds to tri-methylated lysine 4 of histone H3 (H3K4me3). PHF23 is widely expressed in human tissues and various cell lines and exerts a negative effect on autophagy by promoting the degradation of E3 ligase LRSAM1 (Leucine-rich repeat and sterile alpha motif containing 1) (PMID: 32978226, 32380078). The observed molecular weight of PHF23 is ~65 kDa, which may be caused by post-translational modification. The specificity of this antibody was demonstrated by siRNA-mediated knockdown of target protein.

## Storage

**Storage:**

Store at -80°C.

**Storage Buffer:**

PBS Only

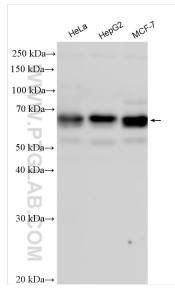
For technical support and original validation data for this product please contact:

T: 1 (888) 4PTGLAB (1-888-478-4522) (toll free in USA), or 1(312) 455-8498 (outside USA)

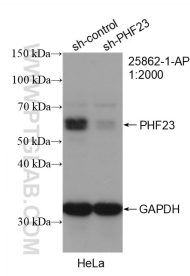
E: [proteintech@ptglab.com](mailto:proteintech@ptglab.com)  
W: [ptglab.com](http://ptglab.com)

**This product is exclusively available under Proteintech Group brand and is not available to purchase from any other manufacturer.**

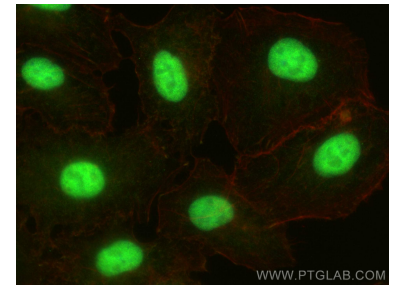
## Selected Validation Data



Various lysates were subjected to SDS PAGE followed by western blot with 25862-1-AP (PHF23 antibody) at dilution of 1:3000 incubated at room temperature for 1.5 hours. This data was developed using the same antibody clone with 25862-1-PBS in a different storage buffer formulation.



WB result of PHF23 antibody (25862-1-AP; 1:2000; incubated at room temperature for 1.5 hours) with sh-Control and sh-PHF23 transfected HeLa cells. This data was developed using the same antibody clone with 25862-1-PBS in a different storage buffer formulation.



Immunofluorescent analysis of (4% PFA) fixed A549 cells using PHF23 antibody (25862-1-AP) at dilution of 1:200 and Multi-rAb CoraLite® Plus 488-Goat Anti-Rabbit Recombinant Secondary Antibody (H+L) (RGAR002), CL594-Phalloidin (red). This data was developed using the same antibody clone with 25862-1-PBS in a different storage buffer formulation.