

Alpha-1-antitrypsin Polyclonal antibody

Catalog Number: 25876-1-AP

Basic Information

Catalog Number:

25876-1-AP

Size:

150ul, Concentration: 1100 ug/ml by Nanodrop and 480 ug/ml by Bradford method using BSA as the standard;

Source:

Rabbit

Isotype:

IgG

Immunogen Catalog Number:

AG22631

GenBank Accession Number:

BC011991

GeneID (NCBI):

5265

UNIPROT ID:

P01009

Full Name:

serpin peptidase inhibitor, clade A (alpha-1 antiproteinase, antitrypsin), member 1

Observed MW:

47-50 kDa

Purification Method:

Antigen affinity purification

Recommended Dilutions:

WB 1:1000-1:6000

IP 0.5-4.0 ug for 1.0-3.0 mg of total protein lysate

IHC 1:400-1:1600

Applications

Tested Applications:

WB, IHC, IP, ELISA

Species Specificity:

human, mouse

Note-IHC: suggested antigen retrieval with TE buffer pH 9.0; (*) Alternatively, antigen retrieval may be performed with citrate buffer pH 6.0

Positive Controls:

WB : human saliva, human urine

IP : human plasma,

IHC : mouse placenta tissue,

Background Information

SERPINA1 is the gene for a protein called alpha-1-antitrypsin (AAT), which is a serine protease inhibitor whose targets include elastase, plasmin, thrombin, trypsin, chymotrypsin, and plasminogen activator. AAT is a glycoprotein synthesized primarily by hepatocytes, with smaller amount synthesized by intestinal epithelial cells, neutrophils, pulmonary alveolar cells and macrophages. AAT is the most abundant, endogenous serine protease inhibitor in blood circulation and it has been implicated in regulating vital fluid phase biological events such as blood coagulation, fibrinolysis, complement activation, apoptosis, reproduction, tumor progression and inflammatory response. The primary function of AAT is thought to be the inactivation of neutrophil elastase and other endogenous serine proteases. Defects in SERPINA1 can cause emphysema or liver disease.

Storage

Storage:

Store at -20°C. Stable for one year after shipment.

Storage Buffer:

PBS with 0.02% sodium azide and 50% glycerol pH 7.3.

Aliquoting is unnecessary for -20°C storage

*** 20ul sizes contain 0.1% BSA

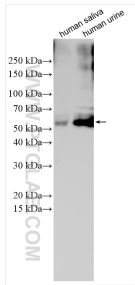
For technical support and original validation data for this product please contact:

T: 1 (888) 4PTGLAB (1-888-478-4522) (toll free in USA), or 1(312) 455-8498 (outside USA)

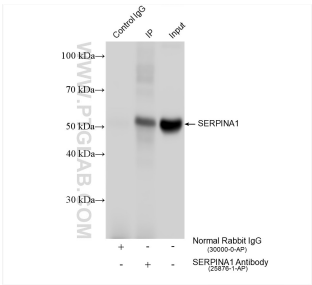
E: proteintech@ptglab.com
W: ptglab.com

This product is exclusively available under Proteintech Group brand and is not available to purchase from any other manufacturer.

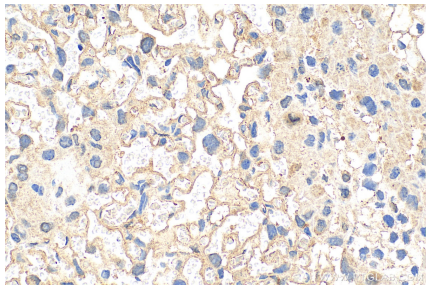
Selected Validation Data



Various lysates were subjected to SDS PAGE followed by western blot with 25876-1-AP (Alpha-1-antitrypsin antibody) at dilution of 1:3000 incubated at room temperature for 1.5 hours.



IP result of anti-Alpha-1-antitrypsin (IP:25876-1-AP, 4ug; Detection:25876-1-AP 1:3000) with human plasma lysate 1600 ug.



Immunohistochemical analysis of paraffin-embedded mouse placenta tissue slide using 25876-1-AP (Alpha-1-antitrypsin antibody) at dilution of 1:800 (under 40x lens). Heat mediated antigen retrieval with Tris-EDTA buffer (pH 9.0).