

For Research Use Only

humanin Polyclonal antibody

Catalog Number: 25886-1-AP **1 Publications**



Basic Information

Catalog Number: 25886-1-AP	GenBank Accession Number: NC_012920	Purification Method: Antigen affinity purification
Size: 150ul , Concentration: 350 µg/ml by Nanodrop and 233 µg/ml by Bradford method using BSA as the standard;	GeneID (NCBI): 4550	Recommended Dilutions: IHC 1:20-1:200
Source: Rabbit	Full Name: L-rRNA	
Isotype: IgG		

Applications

Tested Applications: FC, IHC, ELISA	Positive Controls: IHC : human colon tissue, human heart tissue
Cited Applications: IHC	
Species Specificity: human	
Cited Species: human	

Note-IHC: suggested antigen retrieval with TE buffer pH 9.0; (*) Alternatively, antigen retrieval may be performed with citrate buffer pH 6.0

Background Information

Humanin, also named as MT-RNR2, is a mitochondrial peptide. It plays a role as a neuroprotective factor. It protects against death induced by multiple different familial Alzheimer disease genes and beta amyloid proteins in Alzheimer disease. Humanin reduces the aggregation and fibrillary formation by suppressing the effect of APP on mononuclear phagocytes and acts by competitively inhibiting the access of FPRL1 to APP.

Notable Publications

Author	Pubmed ID	Journal	Application
Małgorzata Blatkiewicz	38256114	Int J Mol Sci	IHC

Storage

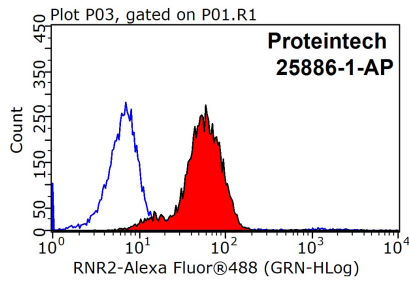
Storage:
Store at -20°C. Stable for one year after shipment.
Storage Buffer:
PBS with 0.02% sodium azide and 50% glycerol pH 7.3.
Aliquoting is unnecessary for -20°C storage

*** 20ul sizes contain 0.1% BSA

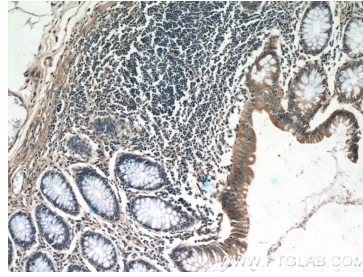
For technical support and original validation data for this product please contact:
T: 1 (888) 4PTGLAB (1-888-478-4522) (toll free in USA), or 1(312) 455-8498 (outside USA)
E: proteintech@ptglab.com
W: ptglab.com

This product is exclusively available under Proteintech Group brand and is not available to purchase from any other manufacturer.

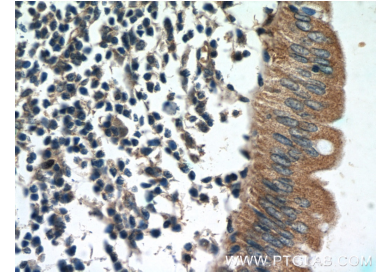
Selected Validation Data



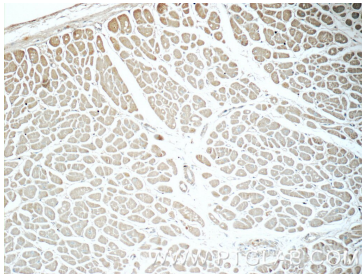
1X10⁶ SH-SY5Y cells were stained with 0.2ug humanin antibody (25886-1-AP, red) and control antibody (blue). Fixed with 90% MeOH blocked with 3% BSA (30 min). Alexa Fluor 488-conjugated AffiniPure Goat Anti-Rabbit IgG(H+L) with dilution 1:1000.



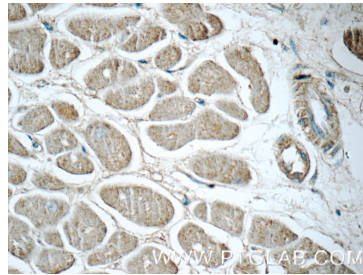
Immunohistochemical analysis of paraffin-embedded human colon tissue slide using 25886-1-AP (humanin Antibody) at dilution of 1:50 (under 10x lens).



Immunohistochemical analysis of paraffin-embedded human colon tissue slide using 25886-1-AP (humanin Antibody) at dilution of 1:50 (under 40x lens).



Immunohistochemical analysis of paraffin-embedded human heart tissue slide using 25886-1-AP (humanin Antibody) at dilution of 1:50 (under 10x lens).



Immunohistochemical analysis of paraffin-embedded human heart tissue slide using 25886-1-AP (humanin Antibody) at dilution of 1:50 (under 40x lens).