

For Research Use Only

Chk1 Polyclonal antibody

Catalog Number: 25887-1-AP

Featured Product

22 Publications



Basic Information

Catalog Number: 25887-1-AP	GenBank Accession Number: BC004202	Purification Method: Antigen affinity purification
Size: 150ul , Concentration: 500 µg/ml by Nanodrop and 367 µg/ml by Bradford method using BSA as the standard;	GeneID (NCBI): 1111	Recommended Dilutions: WB 1:1000-1:6000 IP 0.5-4.0 ug for 1.0-3.0 mg of total protein lysate
Source: Rabbit	Full Name: CHK1 checkpoint homolog (S. pombe)	IHC 1:100-1:400
Isotype: IgG	Calculated MW: 54 kDa	IF 1:50-1:500
Immunogen Catalog Number: AG22993	Observed MW: 55 kDa	

Applications

Tested Applications: FC, IF, IHC, IP, WB, ELISA	Positive Controls:
Cited Applications: CoIP, IF, IHC, IP, WB	WB : HEK-293T cells, HeLa cells, K-562 cells, MCF-7 cells
Species Specificity: human	IP : HEK-293T cells,
Cited Species: human, mouse	IHC : human kidney tissue,
	IF : HEK-293T cells,
Note-IHC: suggested antigen retrieval with TE buffer pH 9.0; (*) Alternatively, antigen retrieval may be performed with citrate buffer pH 6.0	

Background Information

CHEK1(Checkpoint kinase-1) is also named as CHK1 and belongs to the protein kinase superfamily. It is implicated in a circuit in which it activates checkpoints, DNA repair and proliferating cell nuclear antigen and FANCD2 monoubiquitinylation(PMID:21389083). CHEK1 protects vertebrate cells against spontaneous chromosome missegregation and is required to sustain anaphase delay when spindle function is disrupted by taxol(PMID:17276342). It has 3 isoforms produced by alternative splicing with the molecular mass of 54 kDa, 44 kDa and 50 kDa.

Notable Publications

Author	Pubmed ID	Journal	Application
Yeunting Hsieh	32988875	Anticancer Res	WB
Jingyuan Sun	33087136	J Exp Clin Cancer Res	WB,IF
Tai-Hsin Tsai	34858180	Front Pharmacol	WB

Storage

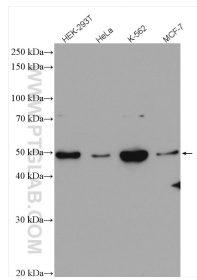
Storage:
Store at -20°C. Stable for one year after shipment.
Storage Buffer:
PBS with 0.02% sodium azide and 50% glycerol pH 7.3.
Aliquoting is unnecessary for -20°C storage

*** 20ul sizes contain 0.1% BSA

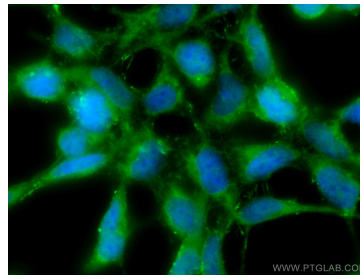
For technical support and original validation data for this product please contact:
T: 1 (888) 4PTGLAB (1-888-478-4522) (toll free in USA), or 1(312) 455-8498 (outside USA)
E: proteintech@ptglab.com
W: ptglab.com

This product is exclusively available under Proteintech Group brand and is not available to purchase from any other manufacturer.

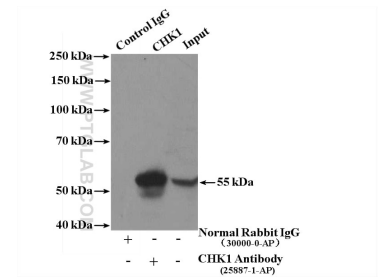
Selected Validation Data



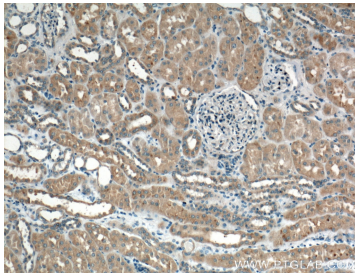
Various lysates were subjected to SDS PAGE followed by western blot with 25887-1-AP (Chk1 antibody) at dilution of 1:3000 incubated at room temperature for 1.5 hours.



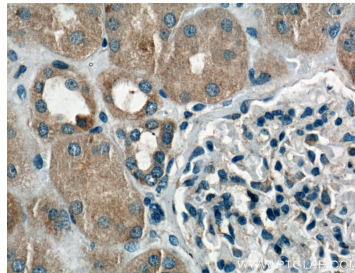
Immunofluorescent analysis of (-20°C Methanol) fixed HEK-293T cells using Chk1 antibody (25887-1-AP) at dilution of 1:200 and CoraLite®488-Conjugated AffiniPure Goat Anti-Rabbit IgG(H+L).



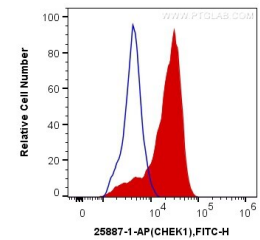
IP Result of anti-CHK1 (IP:25887-1-AP, 4ug; Detection:25887-1-AP 1:600) with HEK-293T cells lysate 4000ug.



Immunohistochemical analysis of paraffin-embedded human kidney tissue slide using 25887-1-AP (CHK1 Antibody) at dilution of 1:200 (under 10x lens).



Immunohistochemical analysis of paraffin-embedded human kidney tissue slide using 25887-1-AP (CHK1 Antibody) at dilution of 1:200 (under 40x lens).



1X10⁶ HEK-293T cells were intracellularly stained with 0.2 ug Anti-Human Chk1 (25887-1-AP) and CoraLite®488-Conjugated AffiniPure Goat Anti-Rabbit IgG(H+L) at dilution 1:1000 (red), or 0.2 ug Control Antibody. Cells were fixed and permeabilized with Transcription Factor Staining Buffer Kit (PF00011).