

For Research Use Only

ADAM10 Polyclonal antibody

Catalog Number: 25900-1-AP

Featured Product

27 Publications



Basic Information

Catalog Number:

25900-1-AP

Size:

150ul, Concentration: 600 ug/ml by Nanodrop;

Source:

Rabbit

Isotype:

IgG

Immunogen Catalog Number:

AG23078

GenBank Accession Number:

BC126253

GeneID (NCBI):

102

UNIPROT ID:

O14672

Full Name:

ADAM metalloproteinase domain 10

Calculated MW:

748 aa, 84 kDa

Observed MW:

60-70 kDa, 90 kDa

Purification Method:

Antigen affinity purification

Recommended Dilutions:

WB 1:500-1:2000

IHC 1:50-1:500

Applications

Tested Applications:

WB, IHC, ELISA

Cited Applications:

WB, IHC, IF

Species Specificity:

human, mouse

Cited Species:

human, mouse, rat

Note-IHC: suggested antigen retrieval with TE buffer pH 9.0; (*) Alternatively, antigen retrieval may be performed with citrate buffer pH 6.0

Positive Controls:

WB: NIH/3T3 cells, mouse brain tissue, rat brain tissue

IHC: human lung cancer tissue, human pancreas cancer tissue

Background Information

ADAM10, a member of the ADAM (a disintegrin and metalloprotease) family, is widely expressed in the brain, the spinal cord, and the visual system during development. MW of premature ADAM10 is 90 kDa and mature ADAM10 is 60-70 kDa (PMID: 24404179).

Notable Publications

Author	Pubmed ID	Journal	Application
Lina Sun	33043016	Front Cell Dev Biol	WB
Bo Wu	28703811	Cell Death Dis	WB, IF
Yao Zhang	30632006	Neurosci Bull	WB

Storage

Storage:

Store at -20°C. Stable for one year after shipment.

Storage Buffer:

PBS with 0.02% sodium azide and 50% glycerol pH 7.3.

Aliquoting is unnecessary for -20°C storage

*** 20ul sizes contain 0.1% BSA

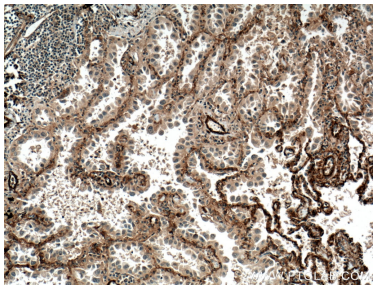
For technical support and original validation data for this product please contact:

T: 1 (888) 4PTGLAB (1-888-478-4522) (toll free in USA), or 1(312) 455-8498 (outside USA)

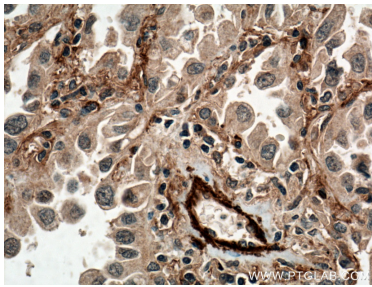
E: proteintech@ptglab.com
W: ptglab.com

This product is exclusively available under Proteintech Group brand and is not available to purchase from any other manufacturer.

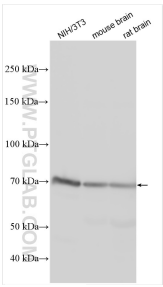
Selected Validation Data



Immunohistochemical analysis of paraffin-embedded human lung cancer tissue slide using 25900-1-AP (ADAM10 antibody) at dilution of 1:200 (under 10x lens. Heat mediated antigen retrieval with Tris-EDTA buffer (pH 9.0).



Immunohistochemical analysis of paraffin-embedded human lung cancer tissue slide using 25900-1-AP (ADAM10 antibody) at dilution of 1:200 (under 40x lens. Heat mediated antigen retrieval with Tris-EDTA buffer (pH 9.0).



Various lysates were subjected to SDS PAGE followed by western blot with 25900-1-AP (ADAM10 antibody) at dilution of 1:1000 incubated at room temperature for 1.5 hours.