

For Research Use Only

SCN3B Polyclonal antibody

Catalog Number: 25907-1-AP



Basic Information

Catalog Number:

25907-1-AP

Size:

150ul, Concentration: 500 ug/ml by Nanodrop;

Source:

Rabbit

Isotype:

IgG

Immunogen Catalog Number:

AG23201

GenBank Accession Number:

BC126265

GeneID (NCBI):

55800

UNIPROT ID:

Q9NY72

Full Name:

sodium channel, voltage-gated, type III, beta

Observed MW:

45-50 kDa

Purification Method:

Antigen affinity purification

Recommended Dilutions:

WB 1:500-1:1000

Applications

Tested Applications:

WB, ELISA

Species Specificity:

human, mouse, rat

Positive Controls:

WB : mouse brain tissue, rat brain tissue

Background Information

The sodium channel is a multi-subunit protein complex composed of a single large α -subunit along with smaller additional β -subunits. There are at least three different β -subunit genes, SCN1b, SCN2b, and SCN3b, all of which are expressed widely in excitable tissues. The bands on Western blots for SCN3b (45-50 kDa) were significantly larger than the predicted molecular weight, which is consistent with the protein being glycosylated. The two bands on the Western blot could be due to different levels of glycosylation or alternative spliced isoforms. (PMID: 11744748)

Storage

Storage:

Store at -20°C. Stable for one year after shipment.

Storage Buffer:

PBS with 0.02% sodium azide and 50% glycerol pH 7.3.

Aliquoting is unnecessary for -20°C storage

*** 20ul sizes contain 0.1% BSA

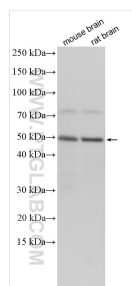
For technical support and original validation data for this product please contact:

T: 1 (888) 4PTGLAB (1-888-478-4522) (toll free in USA), or 1(312) 455-8498 (outside USA)

E: proteintech@ptglab.com
W: ptglab.com

This product is exclusively available under Proteintech Group brand and is not available to purchase from any other manufacturer.

Selected Validation Data



Various lysates were subjected to SDS PAGE followed by western blot with 25907-1-AP (SCN3B antibody) at dilution of 1:500 incubated at room temperature for 1.5 hours.