

For Research Use Only

APOL2 Polyclonal antibody

Catalog Number: 25925-1-AP

Featured Product

2 Publications



Basic Information

Catalog Number:
25925-1-AP

Size:
150ul, Concentration: 1000 µg/ml by
Nanodrop and 533 µg/ml by Bradford
method using BSA as the standard;

Source:
Rabbit

Isotype:
IgG

Immunogen Catalog Number:
AG7622

GenBank Accession Number:
BC004395

GeneID (NCBI):
23780
Full Name:
apolipoprotein L, 2

Calculated MW:
37 kDa

Observed MW:
37 kDa

Purification Method:
Protein A purification

Recommended Dilutions:
WB 1:1000-1:4000
IHC 1:20-1:200
IF 1:10-1:100

Applications

Tested Applications:
IF, IHC, WB, ELISA

Cited Applications:
WB

Species Specificity:
human

Cited Species:
human

**Note-IHC: suggested antigen retrieval with
TE buffer pH 9.0; (*) Alternatively, antigen
retrieval may be performed with citrate
buffer pH 6.0**

Positive Controls:

WB : A549 cells, A431 cells, HeLa cells

IHC : human lung cancer tissue,

IF : HeLa cells,

Background Information

Notable Publications

Author	Pubmed ID	Journal	Application
Jianyun Liu	37543430	Aging (Albany NY)	WB
Haijun Guo	28809973	Chem Commun (Camb)	WB

Storage

Storage:

Store at -20°C. Stable for one year after shipment.

Storage Buffer:

PBS with 0.02% sodium azide and 50% glycerol pH 7.3.

Aliquoting is unnecessary for -20°C storage

*** 20ul sizes contain 0.1% BSA

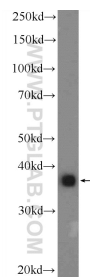
For technical support and original validation data for this product please contact:

T: 1 (888) 4PTGLAB (1-888-478-4522) (toll free
in USA), or 1(312) 455-8498 (outside USA)

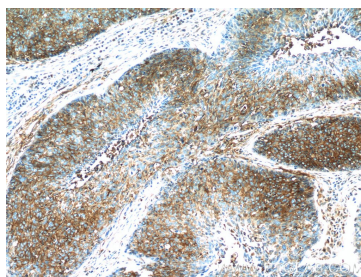
E: proteintech@ptglab.com
W: ptglab.com

This product is exclusively available under Proteintech
Group brand and is not available to purchase from any
other manufacturer.

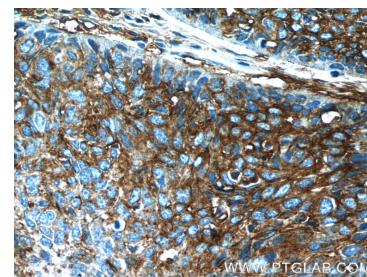
Selected Validation Data



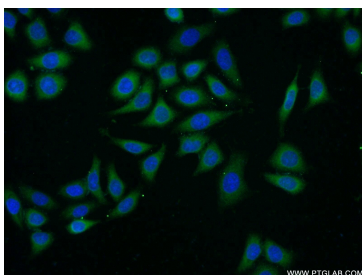
A549 cells were subjected to SDS PAGE followed by western blot with 25925-1-AP (APOL2 Antibody) at dilution of 1:2000 incubated at room temperature for 1.5 hours.



Immunohistochemical analysis of paraffin-embedded human lung cancer tissue slide using 25925-1-AP (APOL2 Antibody) at dilution of 1:200 (under 10x lens).



Immunohistochemical analysis of paraffin-embedded human lung cancer tissue slide using 25925-1-AP (APOL2 Antibody) at dilution of 1:200 (under 40x lens).



Immunofluorescent analysis of (-20°C Ethanol) fixed HeLa cells using 25925-1-AP (APOL2 antibody) at dilution of 1:25 and Alexa Fluor 488-conjugated AffiniPure Goat Anti-Rabbit IgG(H+L).