

For Research Use Only

GlyT2 Polyclonal antibody

Catalog Number: 25948-1-AP



Basic Information

Catalog Number: 25948-1-AP	GenBank Accession Number: BC096319	Purification Method: Antigen affinity purification
Size: 150ul , Concentration: 500 µg/ml by Nanodrop;	GeneID (NCBI): 9152	Recommended Dilutions: WB 1:500-1:1000
Source: Rabbit	Full Name: solute carrier family 6 (neurotransmitter transporter, glycine), member 5	
Isotype: IgG	Calculated MW: 797 aa, 87 kDa	
Immunogen Catalog Number: AG22835	Observed MW: 70 kDa	

Applications

Tested Applications:
WB, ELISA

Species Specificity:
mouse, rat

Positive Controls:

WB: mouse brain tissue, mouse cerebellum tissue, rat brain tissue, rat cerebellum tissue

Background Information

GlyT2 is a transporter protein of the SLC6 family of sodium- and chloride-dependent neurotransmitter transporters. Like other members of the family, GlyT2 is trafficked to the cell surface as homo-oligomers from the endoplasmic reticulum (ER) (PMID: 32714574). GlyT2 is expressed in medulla, and to a lesser extent in spinal cord and cerebellum. GlyT2 has 3 isoforms with the molecular mass of 63, 86 and 87 kDa. The 63 kDa band is the unglycosylated GlyT2 polypeptide, whereas the 70-110 kDa band is a differential glycosylation form of GlyT2 (PMID: 17851090, 17962467).

Storage

Storage:

Store at -20°C. Stable for one year after shipment.

Storage Buffer:

PBS with 0.02% sodium azide and 50% glycerol pH 7.3.

Aliquoting is unnecessary for -20°C storage

*** 20ul sizes contain 0.1% BSA

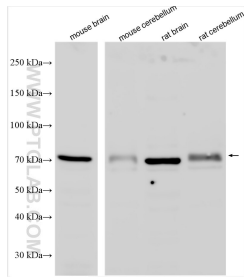
For technical support and original validation data for this product please contact:

T: 1 (888) 4PTGLAB (1-888-478-4522) (toll free in USA), or 1(312) 455-8498 (outside USA)

E: proteintech@ptglab.com
W: ptglab.com

This product is exclusively available under Proteintech Group brand and is not available to purchase from any other manufacturer.

Selected Validation Data



Various lysates were subjected to SDS PAGE followed by western blot with 25948-1-AP (GlyT2 antibody) at dilution of 1:500 incubated at room temperature for 1.5 hours.