

For Research Use Only

# GlyT2 Polyclonal antibody, PBS Only

Catalog Number: 25948-1-PBS



## Basic Information

**Catalog Number:**

25948-1-PBS

**Size:**

100ug, Concentration: 1 mg/ml by Nanodrop;

**Source:**

Rabbit

**Isotype:**

IgG

**Immunogen Catalog Number:**

AG22835

**GenBank Accession Number:**

BC096319

**GeneID (NCBI):**

9152

**UNIPROT ID:**

Q9Y345

**Full Name:**

solute carrier family 6 (neurotransmitter transporter, glycine), member 5

**Calculated MW:**

797 aa, 87 kDa

**Observed MW:**

70 kDa

**Purification Method:**

Antigen affinity purification

## Applications

**Tested Applications:**

WB, IF-P, Indirect ELISA

**Species Specificity:**

human, mouse, rat

## Background Information

GlyT2 is a transporter protein of the SLC6 family of sodium- and chloride-dependent neurotransmitter transporters. Like other members of the family, GlyT2 is trafficked to the cell surface as homo-oligomers from the endoplasmic reticulum (ER) (PMID: 32714574). GlyT2 is expressed in medulla, and to a lesser extent in spinal cord and cerebellum. GlyT2 has 3 isoforms with the molecular mass of 63, 86 and 87 kDa. The 63 kDa band is the unglycosylated GlyT2 polypeptide, whereas the 70-110 kDa band is a differential glycosylation form of GlyT2 (PMID: 17851090, 17962467).

## Storage

**Storage:**

Store at -80°C.

**Storage Buffer:**

PBS Only

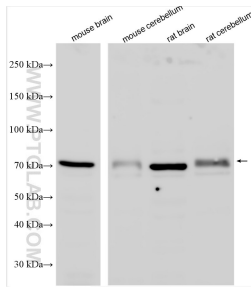
For technical support and original validation data for this product please contact:

T: 1 (888) 4PTGLAB (1-888-478-4522) (toll free in USA), or 1(312) 455-8498 (outside USA)

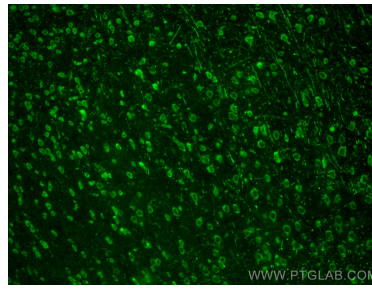
E: [proteintech@ptglab.com](mailto:proteintech@ptglab.com)  
W: [ptglab.com](http://ptglab.com)

**This product is exclusively available under Proteintech Group brand and is not available to purchase from any other manufacturer.**

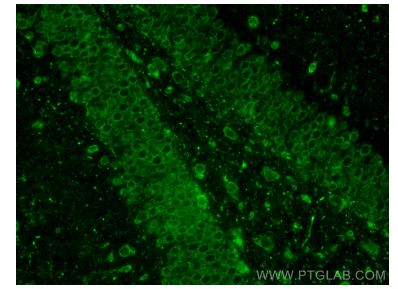
## Selected Validation Data



Various lysates were subjected to SDS PAGE followed by western blot with 25948-1-AP (GlyT2 antibody) at dilution of 1:500 incubated at room temperature for 1.5 hours. This data was developed using the same antibody clone with 25948-1-PBS in a different storage buffer formulation.



Immunofluorescent analysis of (4% PFA) fixed mouse brain tissue using GlyT2 antibody (25948-1-AP) at dilution of 1:200 and CoraLite® 488-Conjugated AffiniPure Goat Anti-Rabbit IgG(H+L). This data was developed using the same antibody clone with 25948-1-PBS in a different storage buffer formulation.



Immunofluorescent analysis of (4% PFA) fixed mouse brain tissue using GlyT2 antibody (25948-1-AP) at dilution of 1:200 and CoraLite® 488-Conjugated AffiniPure Goat Anti-Rabbit IgG(H+L). This data was developed using the same antibody clone with 25948-1-PBS in a different storage buffer formulation.