

For Research Use Only

MFG-E8 Polyclonal antibody

Catalog Number: 25951-1-AP

2 Publications



Basic Information

Catalog Number: 25951-1-AP	GenBank Accession Number: BC003610	Purification Method: Protein A purification
Size: 150ul , Concentration: 280 ug/ml by Nanodrop;	GeneID (NCBI): 4240	Recommended Dilutions: WB 1:500-1:1000 IHC 1:50-1:500
Source: Rabbit	UNIPROT ID: Q08431	
Isotype: IgG	Full Name: milk fat globule-EGF factor 8 protein	
Immunogen Catalog Number: AG13621	Calculated MW: 43 kDa	
	Observed MW: 51 kDa	

Applications

Tested Applications: WB, IHC, ELISA	Positive Controls:
Cited Applications: WB, IHC	WB : Jurkat cells, human placenta tissue
Species Specificity: human	IHC : human skin cancer tissue,
Cited Species: human	

Note-IHC: suggested antigen retrieval with TE buffer pH 9.0; (*) Alternatively, antigen retrieval may be performed with citrate buffer pH 6.0

Background Information

Milk fat globule-epidermal growth factor-factor 8 (MFG-E8), also known as Lactadherin, is a multifunctional secreted glycoprotein exhibiting versatile functions in cell physiology affecting health and diseases. It plays roles in clearing apoptotic cells, anti-inflammatory, wound healing, arterial remodeling, angiogenesis, enhancing tumorigenicity, and cancer metastasis (PMID: 23972256). MFG-E8 consists of two-repeated EGF-like domains, a mucin-like domain, and two-repeated discoidin-like domains (C-domains), and contains an integrin-binding motif (RGD sequence) in the EGF-like domain (PMID: 11856354). It shows ubiquitous patterns of expression in various types of cells and tissues. Altered expression of MFG-E8 causes disruptions of homeostasis and is correlated with several diseases (PMID: 27429513).

Notable Publications

Author	Pubmed ID	Journal	Application
Weiming Ma	39725663	J Cell Mol Med	WB
Yang Li	38192793	Heliyon	IHC

Storage

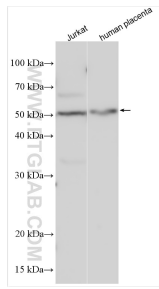
Storage:
Store at -20°C. Stable for one year after shipment.
Storage Buffer:
PBS with 0.02% sodium azide and 50% glycerol pH 7.3.
Aliquoting is unnecessary for -20°C storage

*** 20ul sizes contain 0.1% BSA

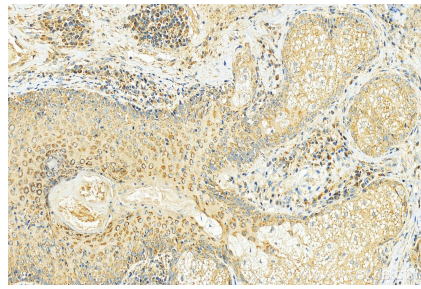
For technical support and original validation data for this product please contact:
T: 1 (888) 4PTGLAB (1-888-478-4522) (toll free in USA), or 1(312) 455-8498 (outside USA)
E: proteintech@ptglab.com
W: ptglab.com

This product is exclusively available under Proteintech Group brand and is not available to purchase from any other manufacturer.

Selected Validation Data



Various lysates were subjected to SDS PAGE followed by western blot with 25951-1-AP (MFG-E8 antibody) at dilution of 1:500 incubated at room temperature for 1.5 hours.



Immunohistochemical analysis of paraffin-embedded skin cancer slide using 25951-1-AP (MFG-E8 antibody) at dilution of 1:100 (under 20x lens). Heat mediated antigen retrieval with Tris-EDTA buffer (pH 9.0).