

For Research Use Only

# C20orf3/APMAP Polyclonal antibody

Catalog Number: 25953-1-AP

Featured Product

2 Publications



## Basic Information

### Catalog Number:

25953-1-AP

### Size:

150ul, Concentration: 350 µg/ml by Nanodrop and 213 µg/ml by Bradford method using BSA as the standard;

### Source:

Rabbit

### Isotype:

IgG

### Immunogen Catalog Number:

AG23029

### GenBank Accession Number:

BC003501

### GeneID (NCBI):

57136

### UNIPROT ID:

Q9HDC9

### Full Name:

chromosome 20 open reading frame 3

### Calculated MW:

416 aa, 46 kDa

### Observed MW:

42-46 kDa

### Purification Method:

Antigen affinity purification

### Recommended Dilutions:

WB 1:500-1:1000

IP 0.5-4.0 µg for 1.0-3.0 mg of total protein lysate

IHC 1:50-1:500

## Applications

### Tested Applications:

WB, IHC, IP, ELISA

### Cited Applications:

WB, IHC, IF

### Species Specificity:

human, mouse

### Cited Species:

human, mouse

**Note-IHC: suggested antigen retrieval with TE buffer pH 9.0; (\*) Alternatively, antigen retrieval may be performed with citrate buffer pH 6.0**

### Positive Controls:

WB : HepG2 cells,

IP : mouse liver tissue,

IHC : human kidney tissue,

## Notable Publications

Author	Pubmed ID	Journal	Application
Siyuan Jiang	30987997	Cancer Res	WB,IHC,IF
Javier Sánchez-Marco	37898391	J Nutr Biochem	WB

## Storage

### Storage:

Store at -20°C. Stable for one year after shipment.

### Storage Buffer:

PBS with 0.02% sodium azide and 50% glycerol pH 7.3.

Aliquoting is unnecessary for -20°C storage

\*\*\* 20ul sizes contain 0.1% BSA

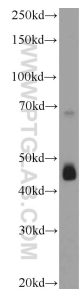
For technical support and original validation data for this product please contact:

T: 1 (888) 4PTGLAB (1-888-478-4522) (toll free in USA), or 1(312) 455-8498 (outside USA)

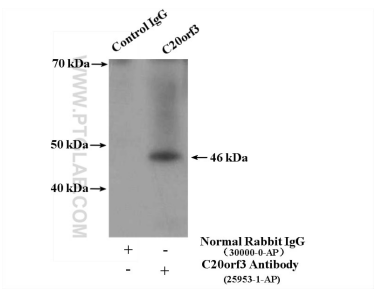
E: [proteintech@ptglab.com](mailto:proteintech@ptglab.com)  
W: [ptglab.com](http://ptglab.com)

This product is exclusively available under Proteintech Group brand and is not available to purchase from any other manufacturer.

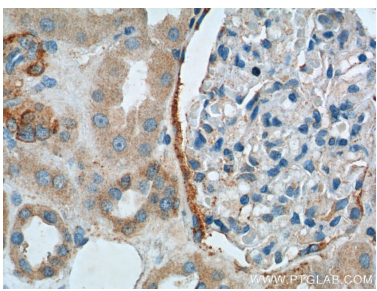
Selected Validation Data



HepG2 cells were subjected to SDS PAGE followed by western blot with 25953-1-AP (C20orf3 Antibody) at dilution of 1:600 incubated at room temperature for 1.5 hours.



IP result of anti-C20orf3/APMAP (IP:25953-1-AP, 4ug; Detection:25953-1-AP 1:300) with mouse liver tissue lysate 4800ug.



Immunohistochemical analysis of paraffin-embedded human kidney tissue slide using 25953-1-AP (C20orf3 Antibody) at dilution of 1:200 (under 40x lens).