

For Research Use Only

# C11orf80 Polyclonal antibody

Catalog Number: 25957-1-AP



## Basic Information

Catalog Number:

25957-1-AP

Size:

150ul, Concentration: 350 ug/ml by Nanodrop and 300 ug/ml by Bradford method using BSA as the standard;

Source:

Rabbit

Isotype:

IgG

Immunogen Catalog Number:

AG22895

GenBank Accession Number:

BC028240

GeneID (NCBI):

79703

UNIPROT ID:

Q8N6T0

Full Name:

chromosome 11 open reading frame 80

Calculated MW:

522 aa, 58 kDa

Observed MW:

70-75 kDa

Purification Method:

Antigen affinity purification

Recommended Dilutions:

WB 1:500-1:1000

IHC 1:20-1:200

## Applications

Tested Applications:

WB, IHC, ELISA

Species Specificity:

human

Positive Controls:

WB : L02 cells,

IHC : human pancreas tissue, human liver tissue

**Note-IHC: suggested antigen retrieval with TE buffer pH 9.0; (\*) Alternatively, antigen retrieval may be performed with citrate buffer pH 6.0**

## Background Information

C11orf80 locates at the chromosome 11. It has two isoforms with MW 70-75 kDa.

## Storage

Storage:

Store at -20°C. Stable for one year after shipment.

Storage Buffer:

PBS with 0.02% sodium azide and 50% glycerol pH 7.3.

Aliquoting is unnecessary for -20°C storage

\*\*\* 20ul sizes contain 0.1% BSA

For technical support and original validation data for this product please contact:

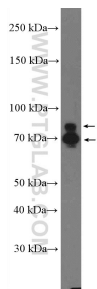
T: 1 (888) 4PTGLAB (1-888-478-4522) (toll free in USA), or 1(312) 455-8498 (outside USA)

E: [proteintech@ptglab.com](mailto:proteintech@ptglab.com)

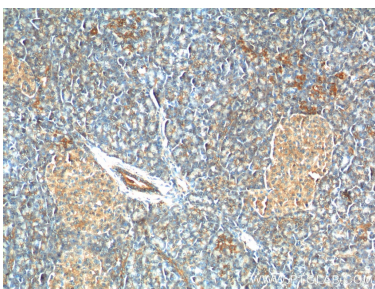
W: [ptglab.com](http://ptglab.com)

This product is exclusively available under Proteintech Group brand and is not available to purchase from any other manufacturer.

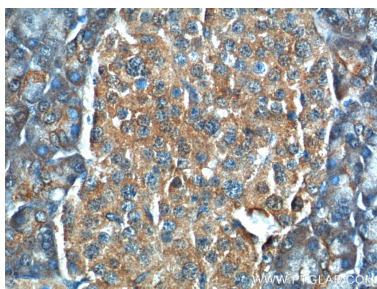
Selected Validation Data



L02 cells were subjected to SDS PAGE followed by western blot with 25957-1-AP (C11orf80 Antibody) at dilution of 1:600 incubated at room temperature for 1.5 hours.



Immunohistochemical analysis of paraffin-embedded human pancreas tissue slide using 25957-1-AP (C11orf80 Antibody) at dilution of 1:200 (under 10x lens).



Immunohistochemical analysis of paraffin-embedded human pancreas tissue slide using 25957-1-AP (C11orf80 Antibody) at dilution of 1:200 (under 40x lens).