

For Research Use Only

JPH1 Polyclonal antibody

Catalog Number: 25979-1-AP



Basic Information

| | | |
|--|--|---|
| Catalog Number: 25979-1-AP | GenBank Accession Number: BC140875 | Purification Method: Antigen affinity purification |
| Size: 150ul , Concentration: 750 ug/ml by Nanodrop and 427 ug/ml by Bradford method using BSA as the standard; | GeneID (NCBI): 56704 | Recommended Dilutions: WB 1:1000-1:4000 IHC 1:50-1:500 |
| Source: Rabbit | UNIPROT ID: Q9HDC5 | |
| Isotype: IgG | Full Name: junctophilin 1 | |
| Immunogen Catalog Number: AG23270 | Calculated MW: 72 kDa | |
| | Observed MW: 72 kDa | |

Applications

Tested Applications:
WB, IHC, ELISA

Species Specificity:
human, mouse, rat

Note-IHC: suggested antigen retrieval with **TE buffer pH 9.0; (*)** Alternatively, antigen retrieval may be performed with **citrate buffer pH 6.0**

Positive Controls:

WB : HEK-293 cells, mouse heart tissue, rat heart tissue

IHC : human skeletal muscle tissue, human skin tissue

Background Information

Junctophilin-1 is a protein that in humans is encoded by the JPH1 gene. This gene is a member of the junctophilin gene family. Junctional complexes between the plasma membrane and endoplasmic/sarcoplasmic reticulum are a common feature of all excitable cell types and mediate cross talk between cell surface and intracellular ion channels. The protein encoded by this gene is a component of junctional complexes and is composed of a C-terminal hydrophobic segment spanning the endoplasmic/sarcoplasmic reticulum membrane and a remaining cytoplasmic domain that shows specific affinity for the plasma membrane.

Storage

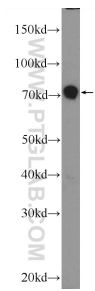
Storage:
Store at -20°C. Stable for one year after shipment.
Storage Buffer:
PBS with 0.02% sodium azide and 50% glycerol pH 7.3.
Aliquoting is unnecessary for -20°C storage

*** 20ul sizes contain 0.1% BSA

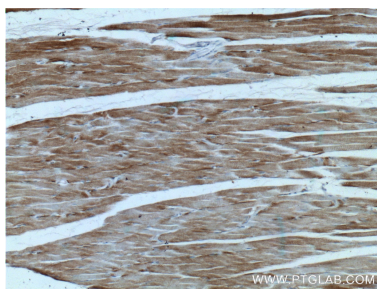
For technical support and original validation data for this product please contact:
T: 1 (888) 4PTGLAB (1-888-478-4522) (toll free in USA), or 1(312) 455-8498 (outside USA)
E: proteintech@ptglab.com
W: ptglab.com

This product is exclusively available under Proteintech Group brand and is not available to purchase from any other manufacturer.

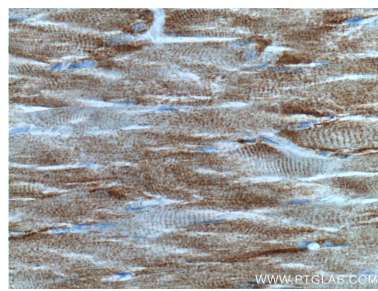
Selected Validation Data



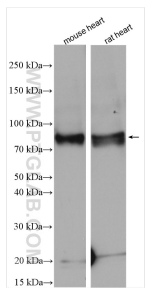
HEK-293 cells were subjected to SDS PAGE followed by western blot with 25979-1-AP (JPH1 Antibody) at dilution of 1:2000 incubated at room temperature for 1.5 hours.



Immunohistochemical analysis of paraffin-embedded human skeletal muscle tissue slide using 25979-1-AP (JPH1 antibody) at dilution of 1:200 (under 10x lens).



Immunohistochemical analysis of paraffin-embedded human skeletal muscle tissue slide using 25979-1-AP (JPH1 antibody) at dilution of 1:200 (under 40x lens).



Various lysates were subjected to SDS PAGE followed by western blot with 25979-1-AP (JPH1 antibody) at dilution of 1:1000 incubated at room temperature for 1.5 hours.