

For Research Use Only

FAM120C Polyclonal antibody

Catalog Number: 25987-1-AP

1 Publications



Basic Information

Catalog Number:

25987-1-AP

Size:

150ul , Concentration: 500 ug/ml by Nanodrop and 373 ug/ml by Bradford method using BSA as the standard;

Source:

Rabbit

Isotype:

IgG

Immunogen Catalog Number:

AG23235

GenBank Accession Number:

BC136413

GeneID (NCBI):

54954

UNIPROT ID:

Q9NX05

Full Name:

family with sequence similarity 120C

Observed MW:

120 kDa

Purification Method:

Antigen affinity purification

Recommended Dilutions:

WB 1:500-1:1000

IP 0.5-4.0 ug for 1.0-3.0 mg of total protein lysate

IF/ICC 1:50-1:500

Applications

Tested Applications:

WB, IF/ICC, IP, ELISA

Cited Applications:

WB

Species Specificity:

human

Cited Species:

human

Positive Controls:

WB : HepG2 cells,

IP : HepG2 cells,

IF/ICC : HepG2 cells,

Notable Publications

Author	Pubmed ID	Journal	Application
Norah Al-Azzam	39486415	Neuron	WB

Storage

Storage:

Store at -20°C. Stable for one year after shipment.

Storage Buffer:

PBS with 0.02% sodium azide and 50% glycerol pH 7.3.

Aliquoting is unnecessary for -20°C storage

*** 20ul sizes contain 0.1% BSA

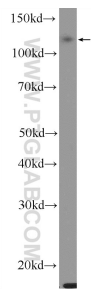
For technical support and original validation data for this product please contact:

T: 1 (888) 4PTGLAB (1-888-478-4522) (toll free in USA), or 1(312) 455-8498 (outside USA)

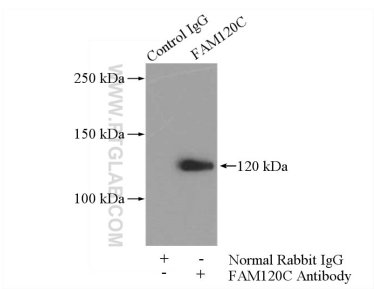
E: proteintech@ptglab.com
W: ptglab.com

This product is exclusively available under Proteintech Group brand and is not available to purchase from any other manufacturer.

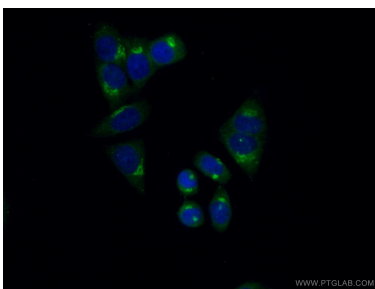
Selected Validation Data



HepG2 cells were subjected to SDS PAGE followed by western blot with 25987-1-AP (FAM120C Antibody) at dilution of 1:600 incubated at room temperature for 1.5 hours.



IP result of anti-FAM120C (IP:25987-1-AP, 4ug; Detection:25987-1-AP 1:500) with HepG2 cells lysate 3600ug.



Immunofluorescent analysis of (10% Formaldehyde) fixed HepG2 cells using 25987-1-AP (FAM120C antibody) at dilution of 1:50 and Alexa Fluor 488-conjugated Goat Anti-Rabbit IgG(H+L).