

For Research Use Only

CPXCR1 Polyclonal antibody

Catalog Number: 26005-1-AP



Basic Information

Catalog Number:

26005-1-AP

Size:

150ul, Concentration: 350 ug/ml by Nanodrop and 233 ug/ml by Bradford method using BSA as the standard;

Source:

Rabbit

Isotype:

IgG

Immunogen Catalog Number:

AG23401

GenBank Accession Number:

BC027614

GeneID (NCBI):

53336

UNIPROT ID:

Q8N123

Full Name:

CPX chromosome region, candidate 1

Observed MW:

28-30 kDa

Purification Method:

Antigen affinity purification

Recommended Dilutions:

WB 1:200-1:1000

IP 0.5-4.0 ug for 1.0-3.0 mg of total protein lysate

Applications

Tested Applications:

WB, IP, ELISA

Species Specificity:

human, mouse

Positive Controls:

WB : mouse liver tissue, human skeletal muscle tissue

IP : mouse skeletal muscle tissue,

Storage

Storage:

Store at -20°C. Stable for one year after shipment.

Storage Buffer:

PBS with 0.02% sodium azide and 50% glycerol pH 7.3.

Aliquoting is unnecessary for -20°C storage

*** 20ul sizes contain 0.1% BSA

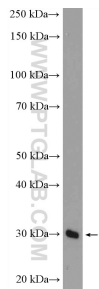
For technical support and original validation data for this product please contact:

T: 1 (888) 4PTGLAB (1-888-478-4522) (toll free in USA), or 1(312) 455-8498 (outside USA)

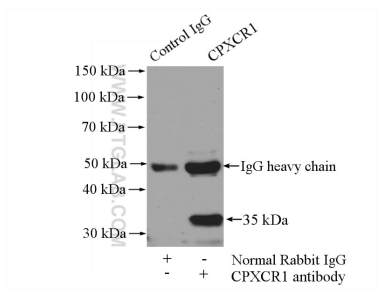
E: proteintech@ptglab.com
W: ptglab.com

This product is exclusively available under Proteintech Group brand and is not available to purchase from any other manufacturer.

Selected Validation Data



mouse liver tissue were subjected to SDS PAGE followed by western blot with 26005-1-AP (CPXCR1 Antibody) at dilution of 1:300 incubated at room temperature for 1.5 hours.



IP result of anti-CPXCR1 (IP:26005-1-AP, 4ug; Detection:26005-1-AP 1:300) with mouse skeletal muscle tissue lysate 3600ug.