

For Research Use Only

# CEP83 Polyclonal antibody

Catalog Number: 26013-1-AP

8 Publications



## Basic Information

<b>Catalog Number:</b> 26013-1-AP	<b>GenBank Accession Number:</b> BC125087	<b>Purification Method:</b> Antigen affinity purification
<b>Size:</b> 150ul, Concentration: 600 ug/ml by Nanodrop;	<b>GeneID (NCBI):</b> 51134	<b>Recommended Dilutions:</b> WB 1:500-1:1000
<b>Source:</b> Rabbit	<b>UNIPROT ID:</b> Q9Y592	<b>IHC 1:50-1:500</b>
<b>Isotype:</b> IgG	<b>Full Name:</b> coiled-coil domain containing 41	<b>IF/ICC 1:200-1:800</b>
<b>Immunogen Catalog Number:</b> AG22826	<b>Calculated MW:</b> 693 aa, 82 kDa	
	<b>Observed MW:</b> 83 kDa, 68 kDa	

## Applications

<b>Tested Applications:</b> WB, IHC, IF/ICC, ELISA	<b>Positive Controls:</b> WB : HEK-293 cells,
<b>Cited Applications:</b> WB, IF	<b>IHC :</b> human kidney tissue,
<b>Species Specificity:</b> human	<b>IF/ICC :</b> hTERT-RPE1 cells,
<b>Cited Species:</b> human, mouse	

**Note-IHC: suggested antigen retrieval with TE buffer pH 9.0; (\*) Alternatively, antigen retrieval may be performed with citrate buffer pH 6.0**

## Background Information

CEP83 (centrosomal protein, 83 kDa), also known as CCDC41 (coiled-coil domain containing 41), is required for ciliary vesicle docking to the mother centriole. It is a key component of the centriolar distal appendages. CCDC41 may collaborate with IFT20 in the trafficking of ciliary membrane proteins from the Golgi complex to the cilium during the initiation of primary cilium assembly (PMID: 23530209). Alternative splicing results in transcript variants encoding two isoforms with calculated molecular weights of 83 kDa and 68 kDa, respectively.

## Notable Publications

Author	Pubmed ID	Journal	Application
Pierrick Le Borgne	36070319	PLoS Biol	IF
Min Liu	34480124	Cell Res	WB,IF
Delowar Hossain	31177295	Cell Mol Life Sci	IF

## Storage

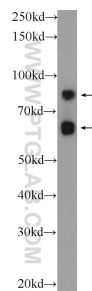
**Storage:**  
Store at -20°C. Stable for one year after shipment.  
**Storage Buffer:**  
PBS with 0.02% sodium azide and 50% glycerol pH 7.3.  
Aliquoting is unnecessary for -20°C storage

\*\*\* 20ul sizes contain 0.1% BSA

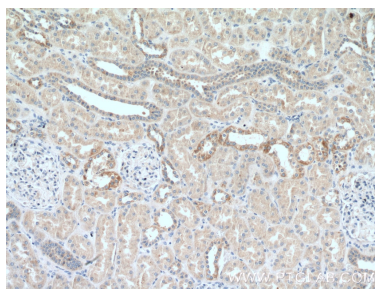
For technical support and original validation data for this product please contact:  
T: 1 (888) 4PTGLAB (1-888-478-4522) (toll free in USA), or 1(312) 455-8498 (outside USA)  
E: [proteintech@ptglab.com](mailto:proteintech@ptglab.com)  
W: [ptglab.com](http://ptglab.com)

This product is exclusively available under Proteintech Group brand and is not available to purchase from any other manufacturer.

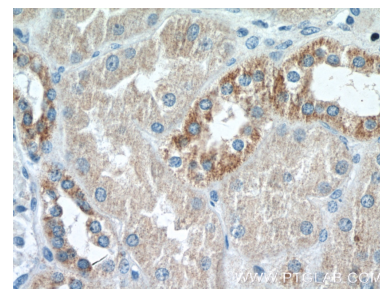
## Selected Validation Data



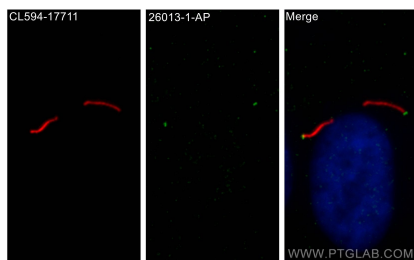
HEK-293 cells were subjected to SDS PAGE followed by western blot with 26013-1-AP (CEP83 Antibody) at dilution of 1:600 incubated at room temperature for 1.5 hours.



Immunohistochemical analysis of paraffin-embedded human kidney tissue slide using 26013-1-AP (CCDC41 antibody) at dilution of 1:200 (under 10x lens).



Immunohistochemical analysis of paraffin-embedded human kidney tissue slide using 26013-1-AP (CCDC41 antibody) at dilution of 1:200 (under 40x lens).



Immunofluorescent analysis of (4% PFA) fixed hTERT-RPE1 cells using CEP83 antibody (26013-1-AP) at dilution of 1:400 and CoraLite®488-Conjugated Goat Anti-Rabbit IgG(H+L), CoraLite®594 ARL13B antibody (CL594-17711, red).